

**ARKIV
VILMANSA**

**FUTURE,
PRESENT AND
PAST**

**16 January – 15 February 2015
Element Art Space**

ARKIV VILMANSA

FUTURE,
PRESENT AND
PAST

16 January – 15 February 2015
Element Art Space

Since his debut in 2005, Vilmansa's works have been featured in galleries in US, Germany, Australia and Indonesia, and he has collaborated with artists and companies such as Huck Gee, Disney, Something.Ill, Pot Meets Pop, Adfunture, Plastic Culture and My Tummy Toys. Vilmansa pegs childhood characters and his architecture background as significant influences on his art. "I like a few animals that have an aura of evil and (are) also funny," he said, citing Mickey Mouse, pandas and killer whales as examples which helped spawn his iconic "Mickiv" character. Over the past several years, Vilmansa's iconic character, "Mickiv," has made the artist a household name within the lowbrow art and toy culture scene in US and Indonesia.

As the title suggests, the exhibition is centralised on the theme of mortality and life as framed with time. An artwork is a product of its era. Time and place position the work, spark its initial idea, nurture its many transformations until that idea solidifies and turns into a form. This spatio-temporal frame implies that the work is a historical being—it is a living being, breathing and vibrating, intimately entwined with the pulsations of its era. Through experiencing time and place, we make sense of our every day world, a world full of forgotten images that already existed in the past, made in the present and will be produced in the future.





3



1. **Eye Of The Storm**, 65 x 60 cm
2. **The Believer**, 65 x 60 cm
3. **More Than Us**, 100 x 120 cm
4. **Endless Mind**, 100 x 100 cm

4



6



7

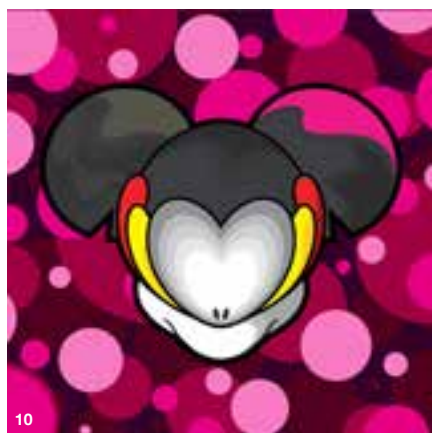


8



9

5. (Detail) **Retina #4**, 70 x 70 cm
6. **Retina #1**, 70 x 70 cm
7. **Retina #2**, 70 x 70 cm
8. **Retina #3**, 70 x 70 cm
9. **Come Back Life**, 65 x 60 cm
10. **The Messenger**, 100 x 100 cm
11. **The Right Thing Right**, 100 x 100 cm
12. **Exit Wounds (Death)**, 100 x 100 cm



Born in 1979, Bandung, Indonesia

Education

1999 - 2004 Department of Architecture,
Parhyanangan University, Bandung, Indonesia

Solo Exhibitions

2015

Solo Exhibition, MAE Gallery, Tokyo, Japan
Young Art Taipei Group Show, Taipei, Taiwan
Solo Exhibition, Vivi Yip Art Room, Jakarta,
Indonesia

Future, Present and Past, Element Art Space,
Singapore

2013

Step Into My World, Vinyl On Vinyl Art Gallery,
Manila, Philippines

In A Moment, Colony Art Space with Vivi Yip
Art Room, Jakarta, Indonesia

Dreaming of Some Space, Galerie Lacroix,
Paris, France

2012

All In The Mind: A Journey To Wounderland
Tour, ViniyOnVinyl Gallery, Manila, Philippines

A New Amusement: A Journey to Wounder-
land Tour, Publika White Box Gallery, Malaysia

Arkivtures: A Journey to Wounderland Tour,
FLABSLAB Gallery, Singapore

Daydreamer: A Journey to Wounderland Tour,
Vivi Yip Art Room, Jakarta, Indonesia

The Aftermath: A Journey to Wounderland
Tour, Toy Art Gallery, Los Angeles, USA

2011

Relics, VinylOnVinyl Gallery, Manila, Philippines

One or Nothing, White Canvas Gallery, Sin-
gapore

Reachable Distance, Vivi Yip Art Room, Jakar-
ta, Indonesia

Escapist, Toy Art Gallery, Los Angeles, USA

Through The Lines, Vincent Michael Gallery,
Philadelphia, USA

2010

Out of Nothing, VinylOnVinyl Gallery, Manila,
Philippines

Riding Curves, Vivi Yip Art Room, Jakarta,
Indonesia

Group Exhibitions

2014

Art Brussels, Gallery Lacroix, Paris

Fun Art Asia: Deconstruction: In Search Of
Truth, The Gallery Goodman Arts, Singapore

In Collaboration with Umah Seni, Glitch Gal-
lery, Jakarta, Indonesia

2013

Sothebys 2013: Modern and Contemporary
Southeast Asian Paintings, Hong Kong

Art Bazaar Jakarta 2013, Jakarta, Indonesia

Sydney Contemporary Art 2013, Sydney,
Australia

Art 'O' Clock 2013 Paris, La Defense, France

Sovereign Art Asian Prize 2013-2014, Hong
Kong

Genoma Contemporary Art, Italy

2012

Neopopstreetpunk 4, Gallery M Squared,
Houston, USA

Pangeaseed, Roqlarue Gallery, Spoke Art
Gallery, Lebasse Project Gallery, USA

Bazaar Art Jakarta, Pacific Place, Jakarta,
Indonesia

Art On The Move: Auction, Oceanic Aware-
ness Collaboration, White Walls Gallery, San
Fransisco, USA

Underpaid, Group Show, Hold Up Art Gallery,
Los Angeles, USA

2011

Beyondeden, Art Fair, Los Angeles, USA

Genoma Contemporary, Venice Biennale,
Venice, Italy

Pressed, A Silkscreen exploration, Hold Up Art
Gallery, Los Angeles, USA

Interstellar: Artist Project by The Howler Terror
Club, Goods Dept, Jakarta, Indonesia

Dreweatts' Urban Contemporary, Haven

House Children's Hospic Auction, London, UK

Oceanic Awareness Collaboration's First

Annual 2011, Andi Campognone Projects, Los
Angeles, USA

2010

Boarded Up, The Art Of Surf and Skate, Gal-
lery M Squared, Houston, USA

Multiversal Group Art Show, Art Basel Miami,
Miami, USA

Art Strikes Back, Art Asylum Boston, Fourth
Wall Gallery, Boston, USA







(preceding page)

Drawn from Memory, 100 x 120 cm

13. The End is Near, 100 x 120 cm

Published by Element Art Space Pte Ltd © 2014

Element Art Space

Raffles Hotel Arcade
328 North Bridge Road #02-13

Singapore 188719

TEL: +65 6883 2001

FAX: +65 6883 2707

info@elementartspace.com

www.elementartspace.com

All artworks by Arkiv Vilmansa are epoxy resin and acrylic on acrylic sheet mounted on wood panel and dated 2014.

Dimension of works are given in centimeters,
height x length

Director

Aniela Rahardja

Gallery Administrator

Stephanie Seet Ying

Gallery Assistant

Neelaufar Binte Haji Mohamed Ayup

Graphic Designer

Stephanie Seet Ying

element
ART SPACE

