



# Landscape in My Mind

marintansirait @2024 - 2025

Catalog of ink on paper works of 2024 - 2025

# Landscape in my mind

In twilight's fading light, whispers of the past ignite. Ink on paper, deep and dark, from slumbered thoughts does embark. Particles dance in cosmic play, microbes greet the dawn of day. In shadows cast, fears are shown, life's genesis in silent storm. Plants unfurl in verdant grace, amidst an ecosystem's sacred space. Animals roam their destined place, a tender glow in nature's embrace. Collective dreams in ink unfold, tales of birth and life retold. Ancestors' wisdom in life's flow, reflection stirs where journeys go. Amidst a world of cold and gray, find the light which will guide our way. To cherish each and every breath, and find our humanity in the depth.

Marintan Sirait @2024

marintansirait @2024 - 2025



# Landscape in my mind

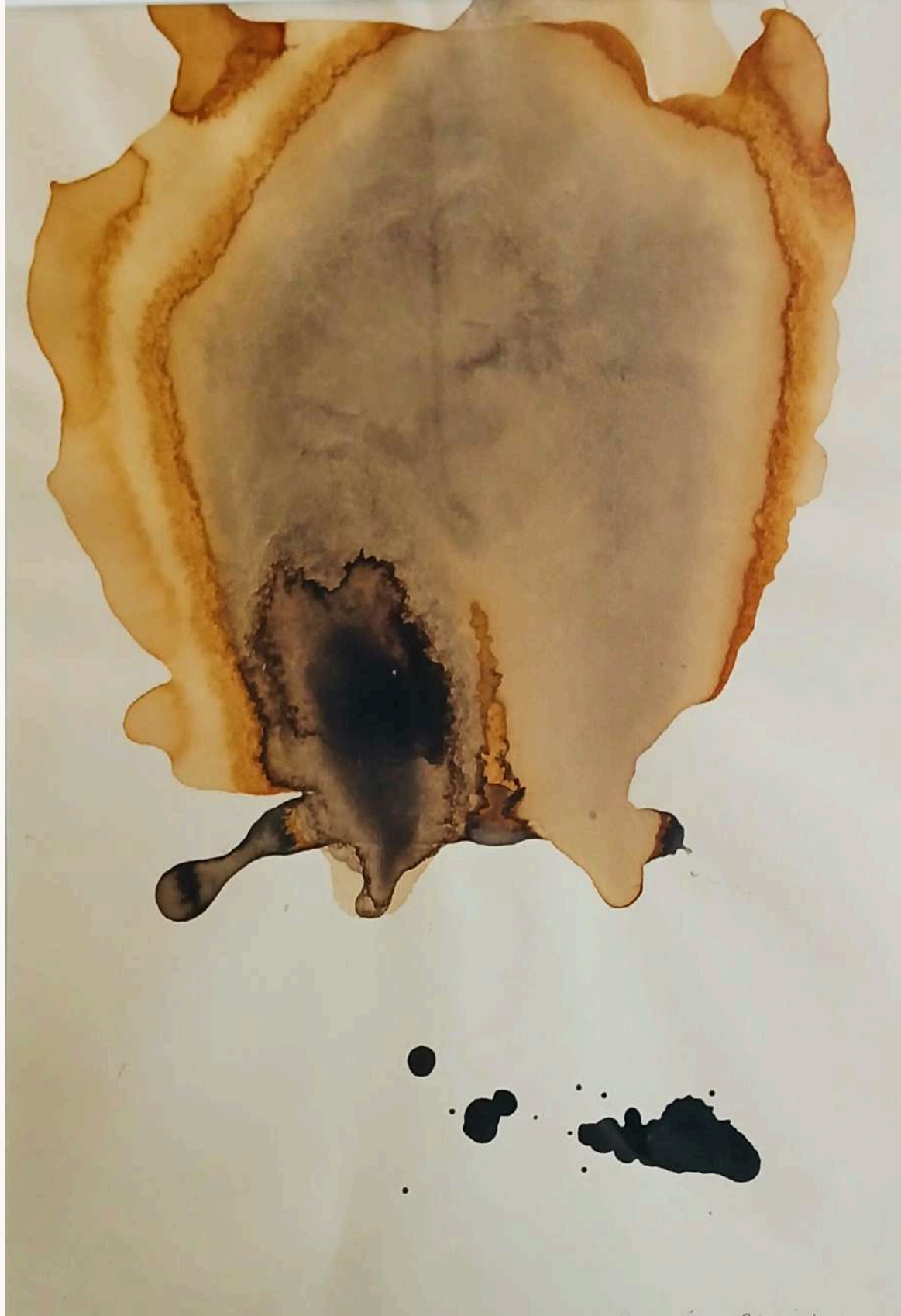
Landscape in my mind is a gateway into our inner landscape – a space where thoughts, time and space interwine

China ink & natural tea color on acid-free paper,  
artwork size 29,7 x 42 cm,  
frame size 45,5 x 58 cm



marintansirait @2024 - 2025



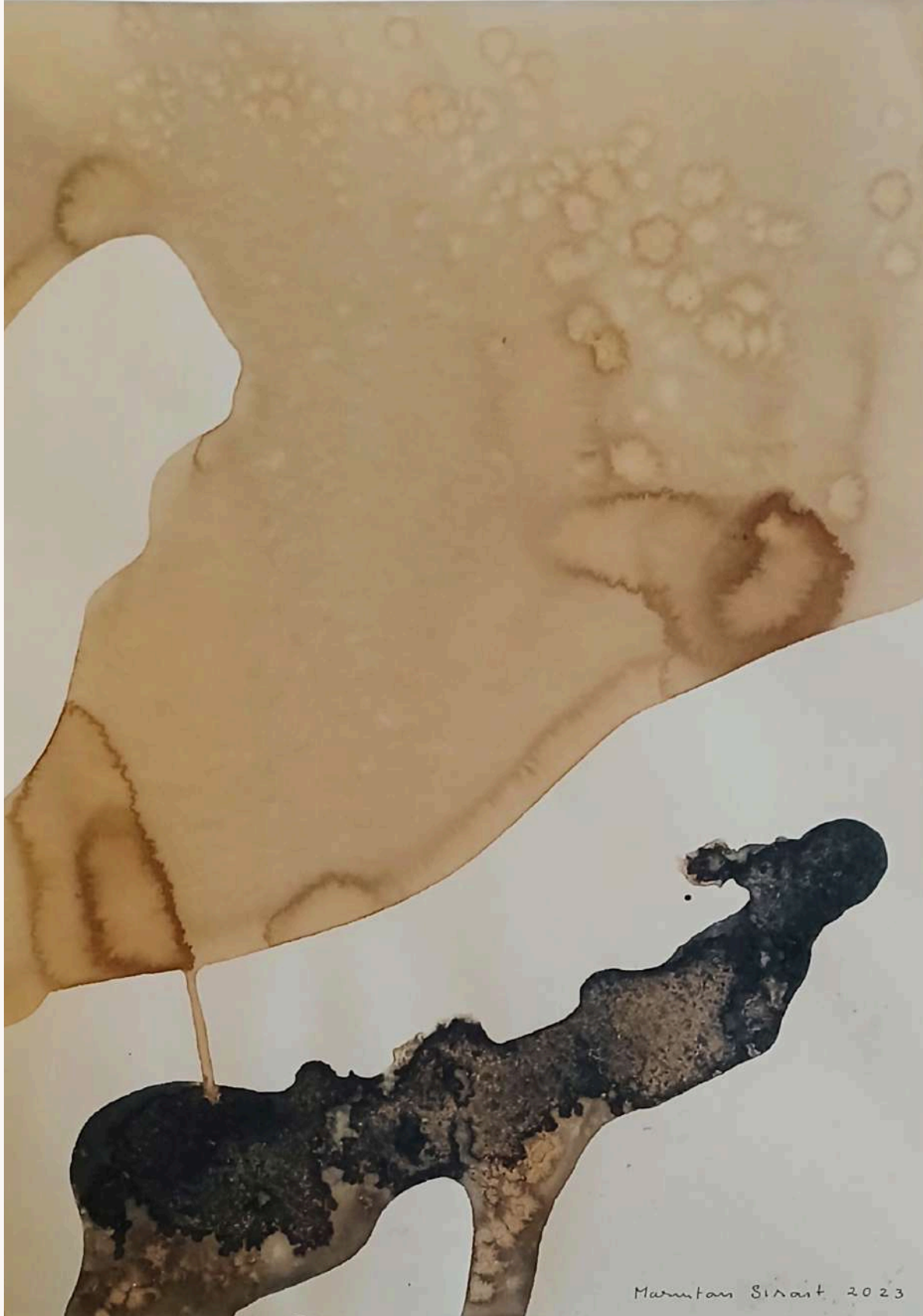


Landscape in my mind 1



sold

marintansirait @2024 - 2025



Landscape in my mind 2



sold

marintansirait @2024 - 2025



Landscape in my mind 3

marintansirait @2024 - 2025



Landscape in my mind 4

marintansirait @2024 - 2025





Landscape in my mind 5





Landscape in my mind 6



sold

marintansiraït @2024 - 2025

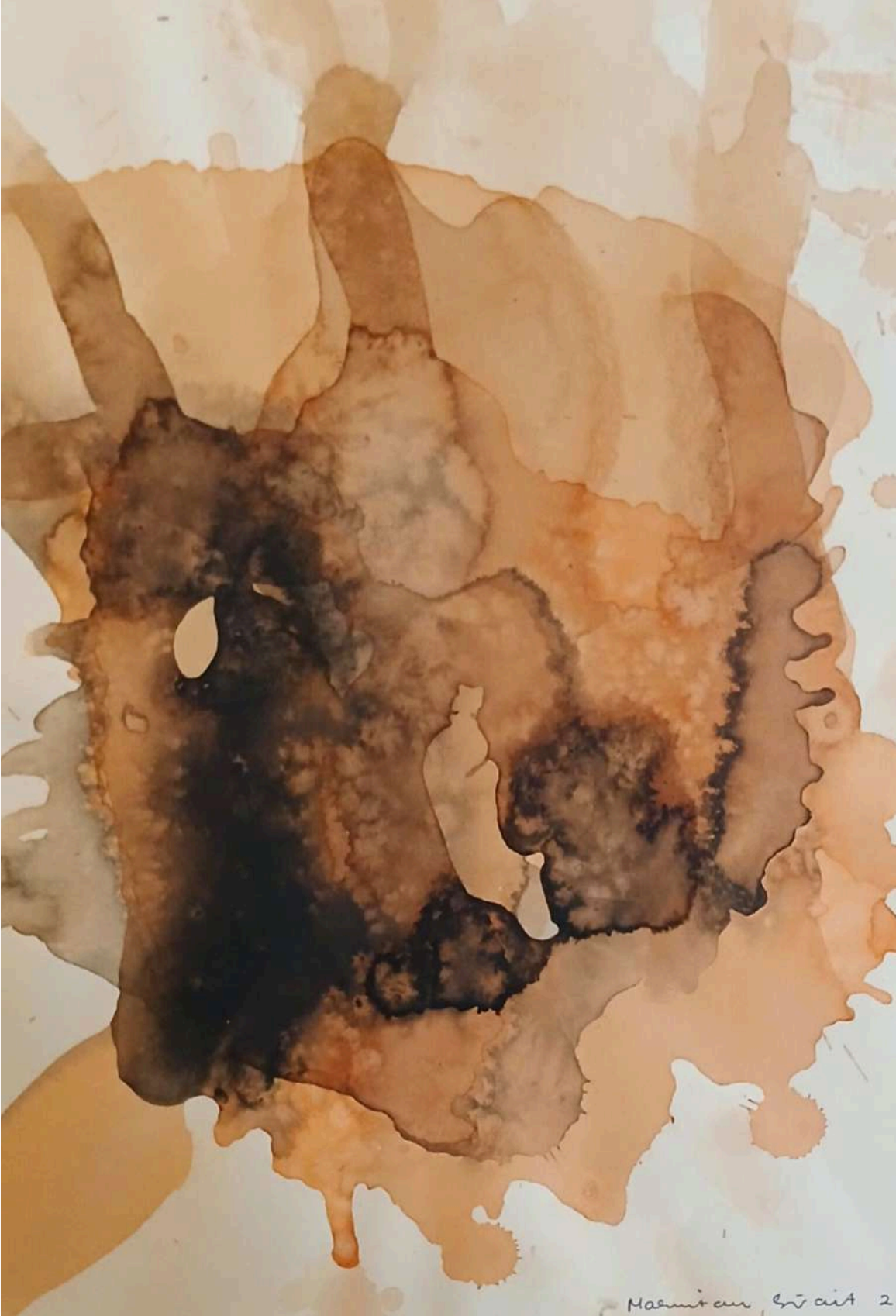


Landscape in my mind 7



sold

marintansirait @2024 - 2025



Landscape in my mind 8

marintansirait @2024 - 2025





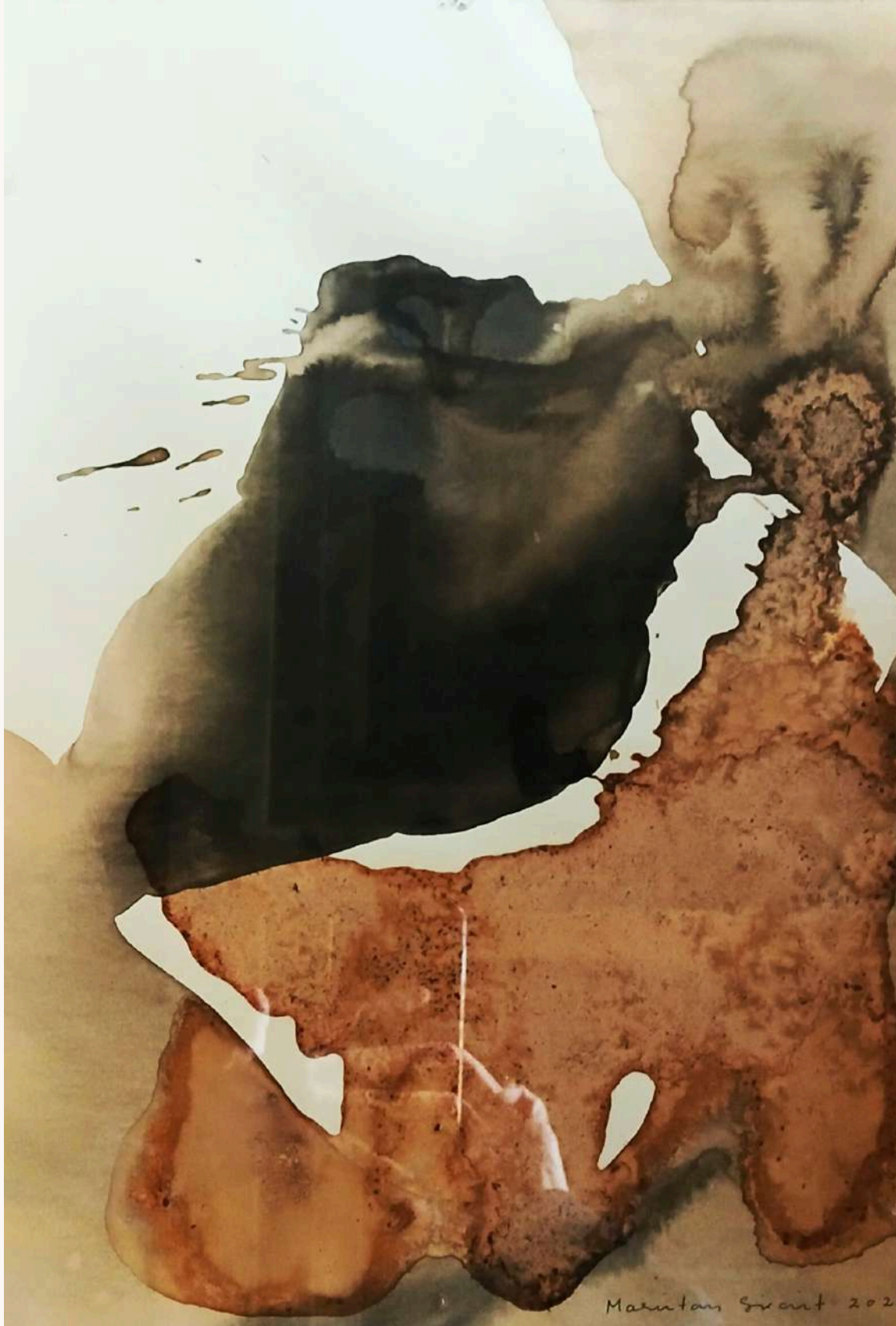
Landscape in my mind 9

marintansirait @2024 - 2025



Landscape in my mind 10

marintansirait @2024 - 2025



Landscape in my mind II



sold

marintansirait @2024 - 2025



Landscape in my mind 12



marintansirait @2024 - 2025



Landscape in my mind 13

marintansirait @2024 - 2025





Landscape in my mind 14

marintansirait @2024 - 2025





Landscape in my mind 15

marintansirait @2024 - 2025



Landscape in my mind 16

marintansirait @2024 - 2025





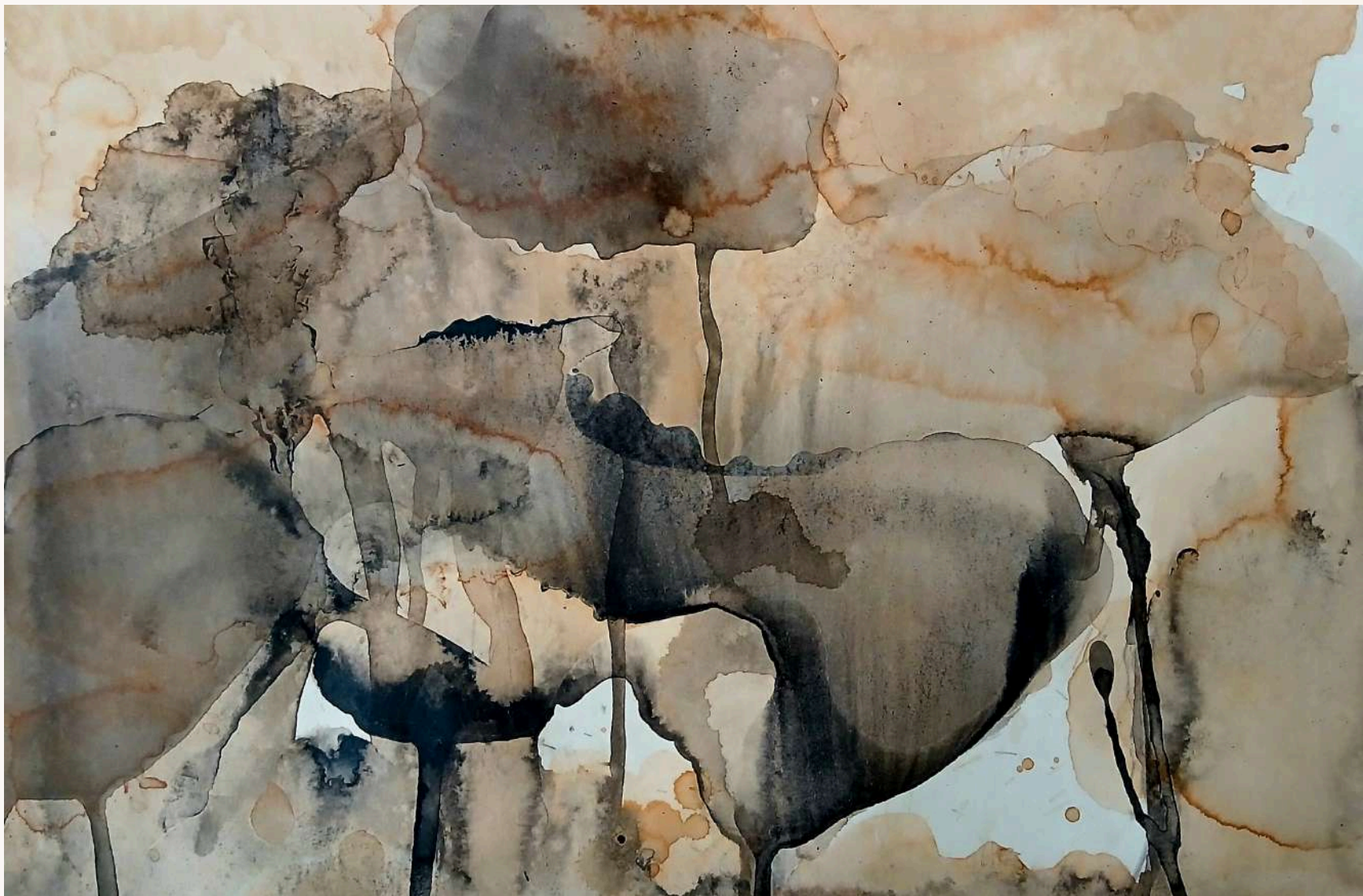
Landscape in my mind 17





Landscape in my mind 18

marintansirait @2024 - 2025



Landscape in my mind 19



sold

marintansirait @2024 - 2025





Landscape in my mind 20



Landscape in my mind 21





Landscape in my mind 22

marintansirait @2024 - 2025

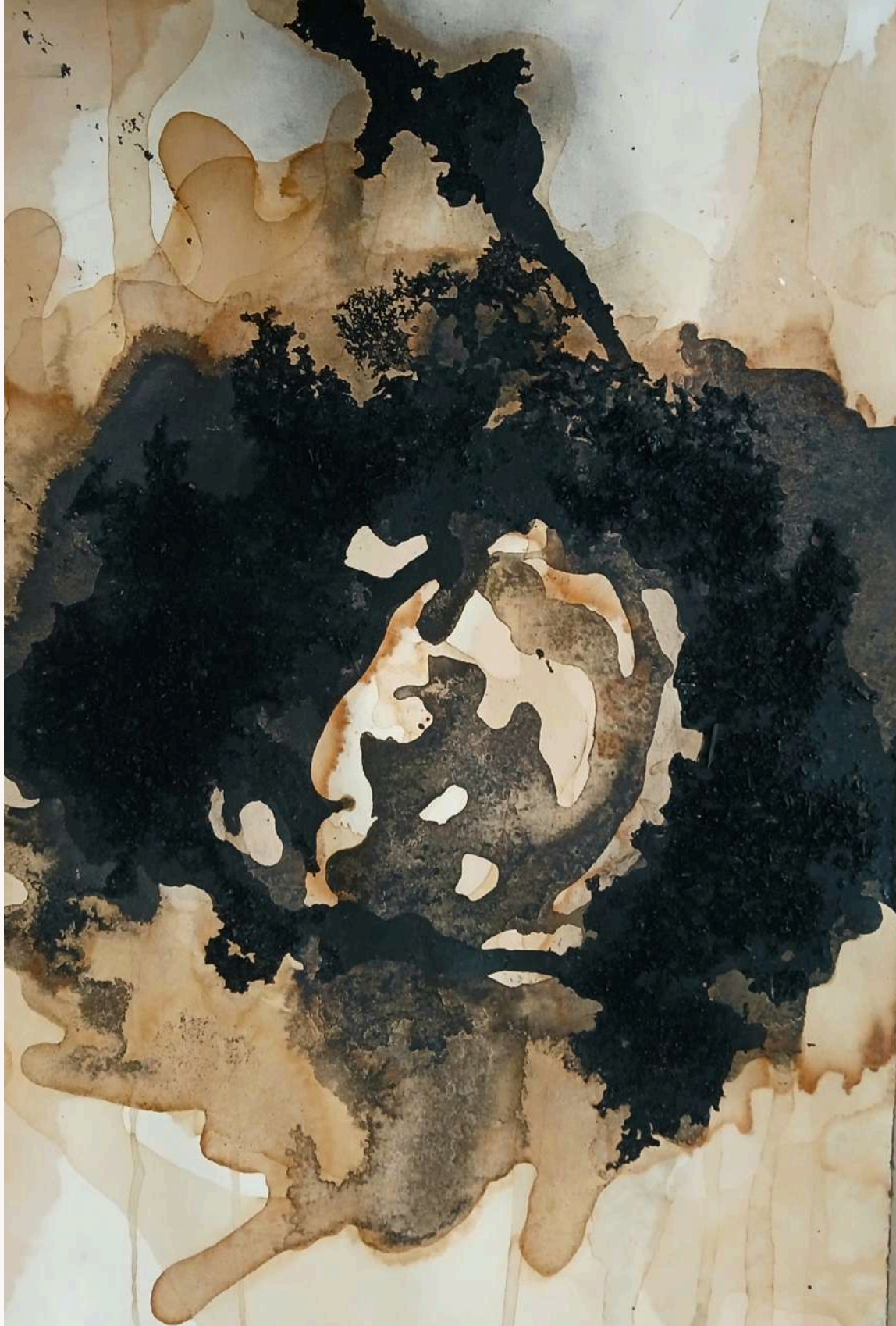


Landscape in my mind 23



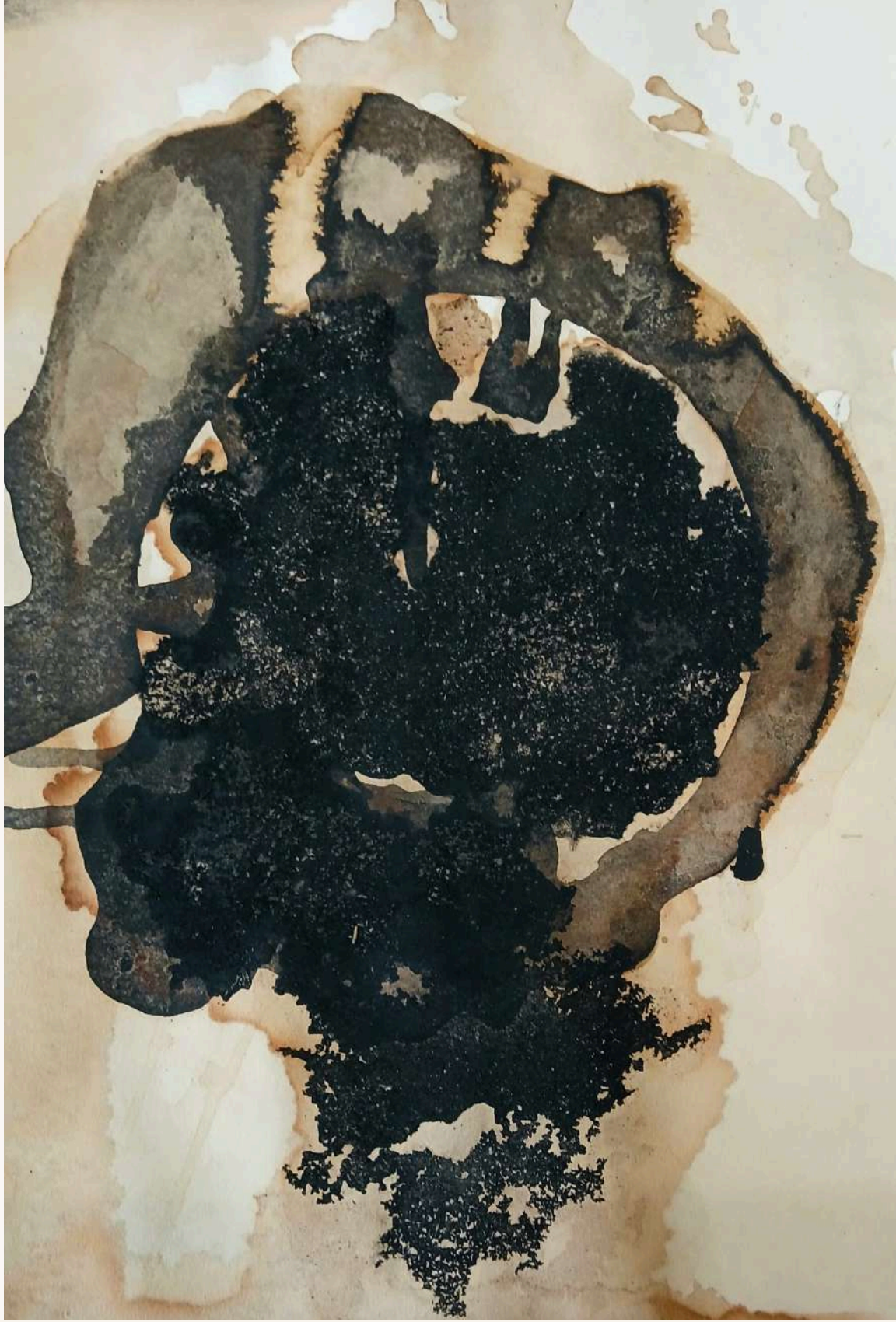
marintansirait @2024 - 2025



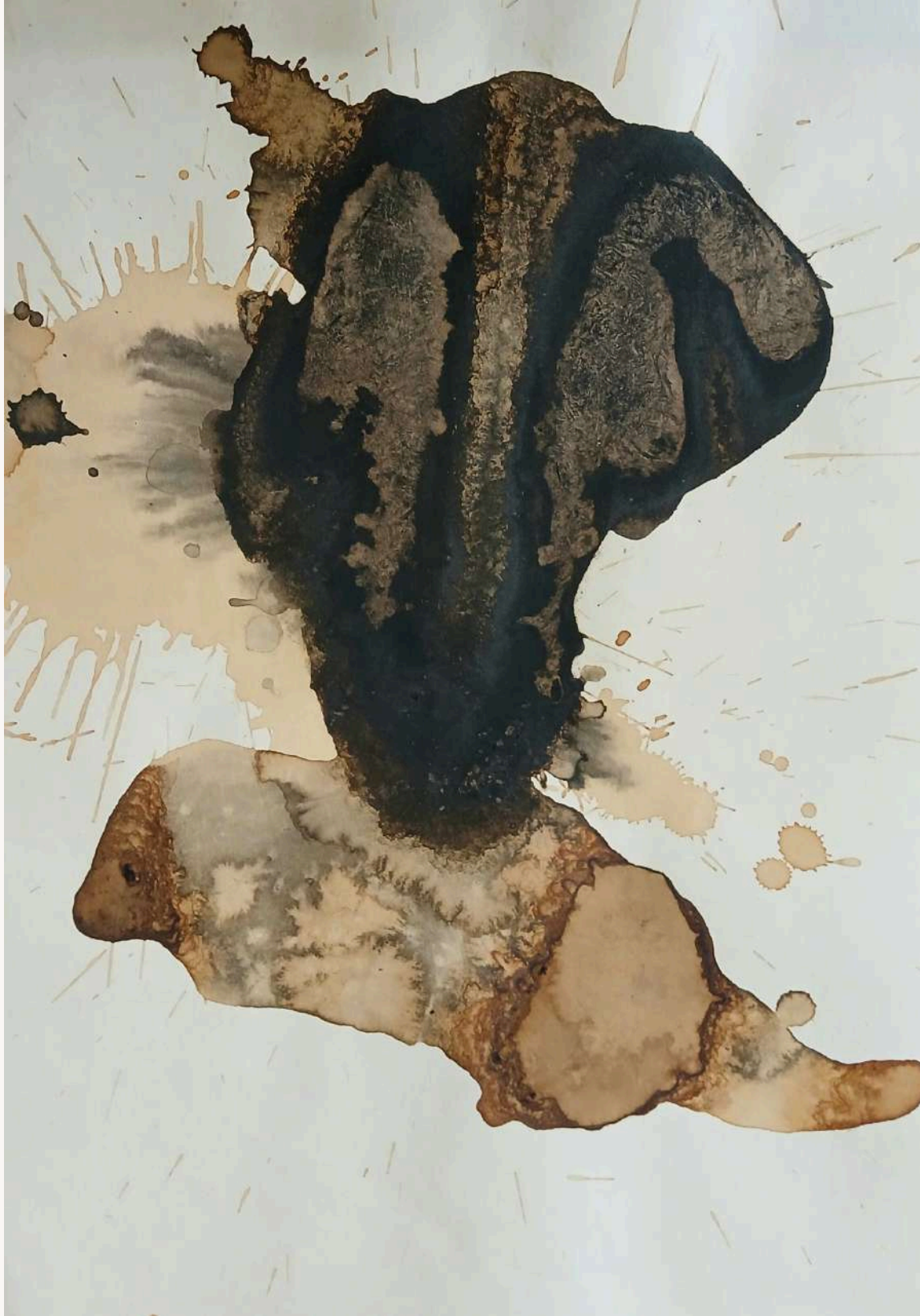


Landscape in my mind 24





Landscape in my mind 25



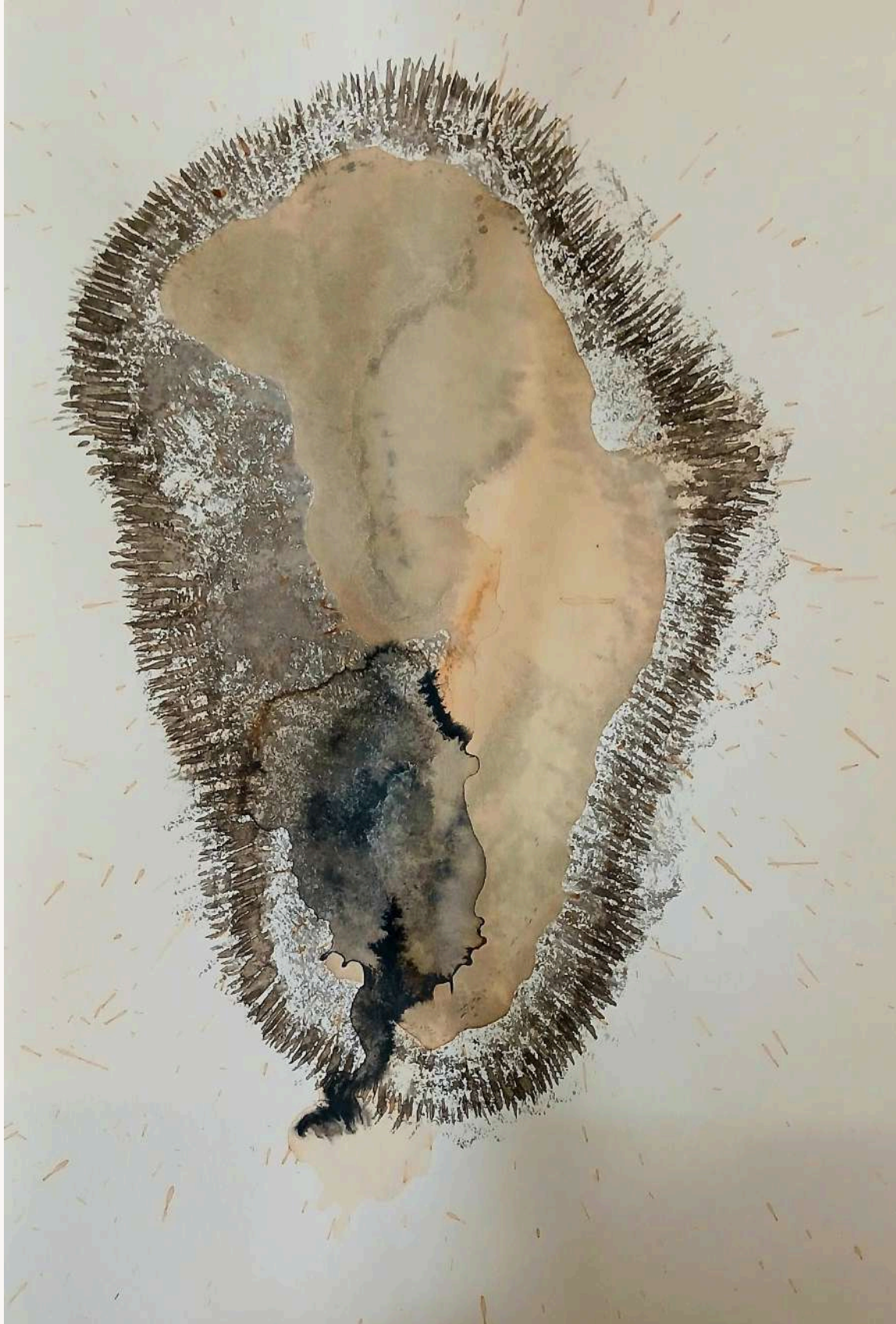
Landscape in my mind 26





Landscape in my mind 27

Landscape in my mind 28



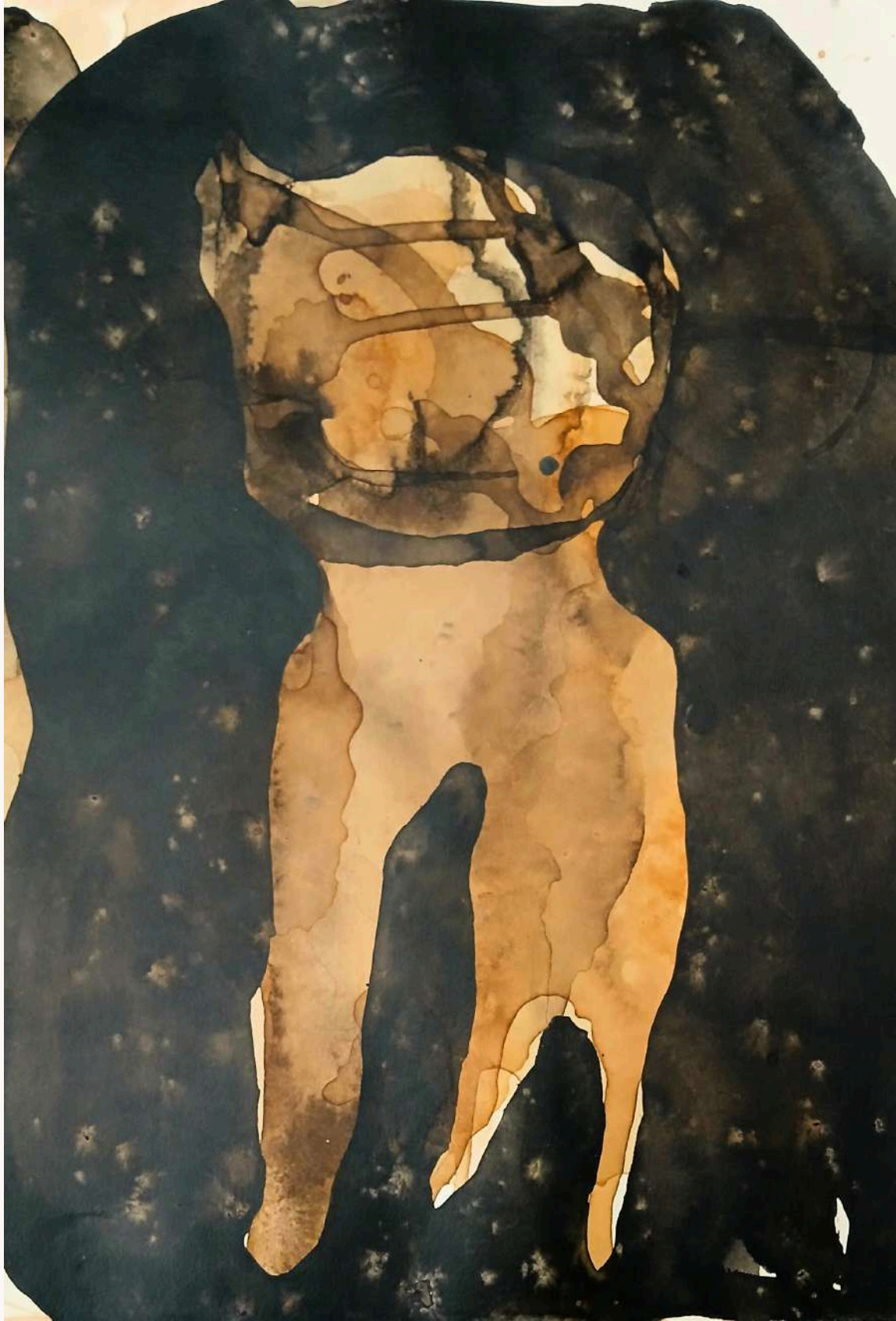
marintansirait @2024 - 2025





Landscape in my mind 29





Landscape in my mind 30



Landscape in my mind 31





Landscape in my mind 32

marintansirait @2024 - 2025



# Landscape in my mind

Artwork Price Rp.6.500.000 / each  
Not include delivery cost. .

marintansirait @2024 - 2025



# About Marintan Sirait

Marintan Sirait (Braunschweig, 1960) is a visual and performance artist and facilitator of collaborative and participatory art projects.

In the 1980s, she co-initiated groups such as Perengkel Jahe and Rupa Gerak Bunyi with artists from various universities/ communities, aiming to explore new artistic vocabularies and engage in social and political dialogues.

Marintan completed her study in Fine Arts at FSRD ITB and has actively participated in exhibitions, performances, workshops, seminars, and residencies since 1992 until now, both locally and internationally, included National Gallery – Jakarta, APT QAG Brisbane, PSI MOMA – New York; The Secession – Vienna; CAPC Museum – Bordeaux; KIASMA – Helsinki; Hayward Gallery – London; Louisiana Museum – Copenhagen, KHOJ, India, Gwangju Biennale, Korea, Bangladesh Biennale, Indonesia Bertutur – Ubud etc.

Her most renowned works includes performance/ installation/painting/ drawings of 'Building a House,' 'My Body My Home,' and 'Long Distance Call From Home,' which conceptualise the personal and communal body as a house—an intimate and vulnerable place in human interactions. 'Building a House' serves as a metaphorical acupuncture for the body and soul, connecting nature with the human realm. Through this work, Marintan invites viewers to reconnect with fundamental aspects such as breath, heartbeat, and their relationship with their bodies, as well as natural orientations like trees, mountains, springs, and star constellations. The artwork provides a temporary retreat from the noise and rush of daily life, offering a space for reflection and rediscovery of our connection with nature and ourselves.

Thank you  
very much  
for your  
appreciation...

More Info:

ORBITAL DAGO

Jl. Rancakendal no 7,

Cigadung, Bandung 40191

Contact: 0812-9452-6253

Email: rifky68@gmail.com