



meiro  
collection

# Garden of Dreams CATALOG

28 JUNE — 31 JULY



# *INTRODUCTION*

Every dream, like a garden, begins with a small seed a faint image in the mind that, with dedication, faith, and hope, gradually takes shape and becomes real. Garden of Dreams explores this imaginative threshold between reality and fiction, between wakefulness and slumber. It is not merely a space to look, but a space to feel a living landscape built from personal narratives, untamed intuition, and gentle whispers from the subconscious minds of the artists.

**This exhibition brings together 13 artists** from 6 countries Indonesia, Taiwan, the Philippines, Thailand, Malaysia, and South Korea representing diverse disciplines: painters, sculptors, and toy designers. Some present their works in Indonesia for the first time, while others return with Meiro Collection after participating in the group exhibition Untold Stories (March–April 2025). This diversity does not merely broaden perspectives but enriches the dimensions of dreams, expressed through varied mediums and visual languages.

# *INTRODUCTION*

**Each work in this exhibition can be seen as a fragment of a dream** a glimpse into the artist's inner world, carefully nurtured and made tangible. Imagination knows no boundaries of medium; it flows through paintings that speak like poetry, takes form in sculptures condensed with longing and hope, and manifests in installations that invite us to pause, to listen to silence, and to reflect. In this garden, there is no single path. Every corner offers possibility, every turn brings surprise, every space welcomes contemplation.

Garden of Dreams is also a liberating space. It is not confined by the logic of the external world, nor bound by the need for a linear narrative or fixed definition of "art." It is in this openness that the exhibition finds its strength as a place where imagination breathes freely, where the process is as important as the outcome, and **where dreams are kept alive, wild, and fertile.**

# *INTRODUCTION*

Through an atmosphere imbued with wonder, Meiro Collection invites the public not only to see but to feel and experience. **This exhibition encourages us to walk gently among dreams** made manifest, to wander the unexpected paths that connect one inner world to another. Like a garden that grows with time, the works in this exhibition remind us that even in chaos, there is room for peace; that among the noise of the world, there remains a space for stillness, for hope, and for the courage to keep dreaming.

**Garden of Dreams is a celebration of the power of imagination** not as an escape from reality, but as an alternate way of sensing and understanding it: with greater honesty, sensitivity, and freedom.



# PARTICIPATING ARTISTS



<b>El El Elpis</b> <i>Thailand</i>	6
<b>Eury Kim</b> <i>South Korea</i>	13
<b>iGuyy</b> <i>Thailand</i>	18
<b>Jane Kibari</b> <i>Thailand</i>	22
<b>Klaris</b> <i>Philippines</i>	36
<b>Kung Sholl</b> <i>Thailand</i>	43
<b>Little Poupees</b> <i>Malaysia</i>	50
<b>Ndikol</b> <i>Indonesia</i>	55
<b>Poyun Wang</b> <i>Taiwan</i>	61
<b>Rizal Ulum</b> <i>Indonesia</i>	71
<b>Roya Kanok</b> <i>Thailand</i>	79
<b>Silvia Tampi</b> <i>Indonesia</i>	86
<b>Waniwani</b> <i>Thailand</i>	92



*Garden  
of Dreams*

FEATURING  
***El.El.Elpis***

*ARTIST PROFILE* →

## El El Elpis

Thailand

El is a character created by Thai artist Sarun Homniam, also known as EL.EL.Elpis, as a reflection of his inner world and emotional journey. Born from a period of emptiness and disconnection he explores themes of confusion, sorrow, hope, and self-discovery. Named after the Greek spirit of hope, she embodies a quiet, enduring hope - not as a hero, but as a gentle presence encouraging emotional honesty and self acceptance. Through El, Sarun expresses the beauty of being different and the courage to keep moving forward.

El is actively exhibiting in art galleries (Mango Art Festival TH, Street Star Gallery TH, ChangChui Gallery TH, Liberty of Art TH, The Queen's Gallery TH, L.O.F Gallery TH, Meiro Collection Gallery IDN, and Sawadee Panda Art Fair CHINA).



# El as a Door

**El El Elpis** Thailand

*60 x 80 cm*

*Oil on Canvas*

*2025*

# El as a Door

Some moments in life feel too heavy to carry through.

El became the door,

so you could step forward without fear—

and find light waiting on the other side.



# El as a Lamp

**El El Elpis** Thailand

*60 x 80 cm*

*Oil on Canvas*

*2025*



# El as a Lamp

When the night crept in too soon,  
El burned softly in the corner,  
not to shine the brightest—  
but to help a story reach its ending.



# El as a Tree

**El El Elpis** Thailand

*60 x 80 cm*

*Oil on Canvas*

*2025*

# El as a Tree

The forest fell silent.

But El stood up, not as what was lost—

but as what was still needed.

A quiet place for life to begin again.





## Eury Kim

South Korea

Yeahgean Eury Kim is a contemporary South Korean artist celebrated for her emotive and poetic visual language. With a Master's degree from the University of Liverpool and a background in fine arts education across South Korea, Australia, and UK, she has held numerous solo exhibitions across Seoul and participated in international group shows internationally. A recipient of the 2016 Korean Pop Art Creative Award, her work has been featured in The Guide Artist Magazine & in private/public collections worldwide.

Eury Kim is actively exhibiting in art galleries (KIAF Art Fair, Boom Focus Art Fair FRA, The Other Art Fair USA, Ecorock Gallery KOR, Colorbeat Gallery KOR, KBS Gallery KOR, Gallery Knot KOR, Liberty of Art TH, and Meiro Collection Gallery IDN)



# The Garden of Peachlight

**Eury Kim** South Korea

*60 x 80 cm*

*Oil on Canvas*

*2025*



## The Garden of Peachlight

In this dreamlike piece, a young girl and her companion dog, Benji, embark on a journey through a fantastical garden—an inner utopia nestled deep within the unconscious. Guided by Benji, the girl steps through a golden door and climbs a luminous staircase that opens into another dimension: a boundless peach forest blooming with impossible beauty.

The world inside this garden is one where everything defies logic yet feels entirely real. Trees are heavy with golden peaches, and peach blossoms bloom in full splendor under a serene moonlit sky. These elements symbolize the freedom and richness of the unconscious, where desires, emotions, and the essence of self can be explored without limits.

The moon, ever-present in the background, holds deep personal meaning for the artist. As a lifelong symbol of comfort, wonder, and introspection, it casts a tranquil glow over the scene, embodying the quiet power of night-time when the world sleeps and creation awakens.

The girl, adorned with hair shaped like a peach, symbolizes innocence, curiosity, and the potential for transformation. Her presence speaks to the harmony between the self and the unconscious, and the idea that through wonder and exploration, we can reconnect with the purest parts of ourselves. The Garden of Peachlight invites viewers to wander into a world where dreams breathe, emotions bloom, and the child within is free to explore a luminous, inner paradise.





# The Garden of Lemonlight

**Eury Kim** South Korea

*60 x 80 cm*

*Oil on Canvas*

*2025*

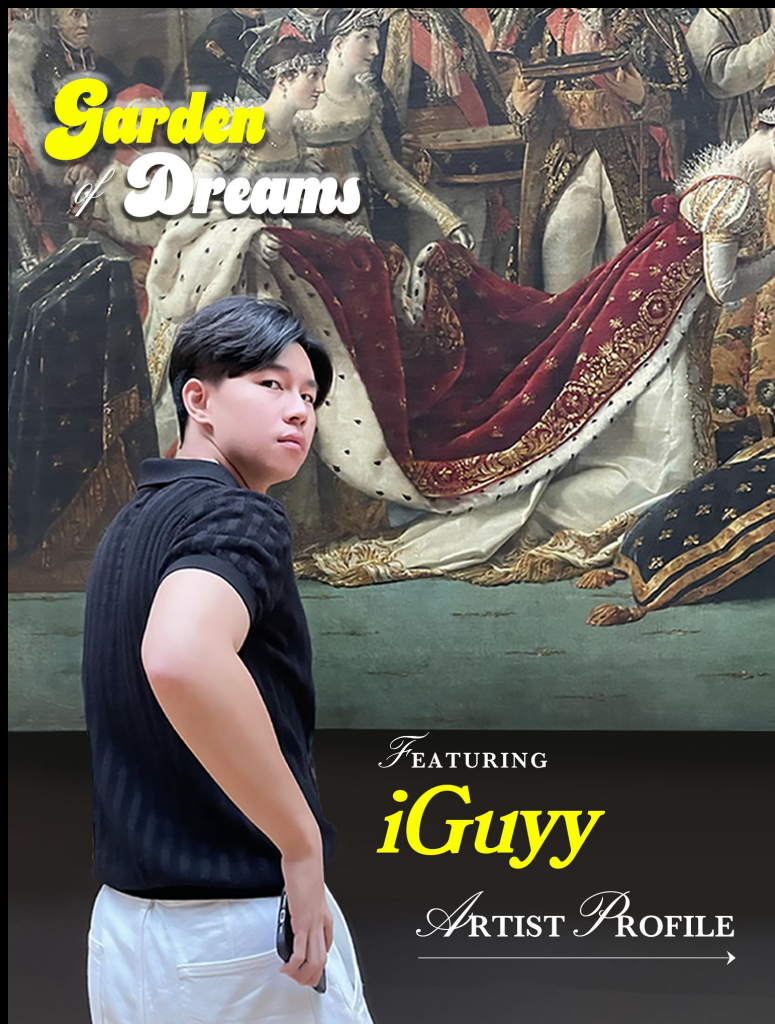
## **The Garden of Lemonlight**

In this dreamlike piece, a young girl with lemon-shaped hat is invited into a utopian garden of the unconscious by a white cat named Sebastian. Waiting at the top of a golden staircase, Sebastian stands at the threshold between dimensions, gently guiding the girl—and with her, the viewer—into a world where inner healing, emotion, and wonder come alive.

This fantastic garden overflows with ripe lemons glowing with golden light. In the artist's world, the lemon represents vitality, energy, and healing—like a burst of sunlight or a dose of vitamin for the soul. The abundant fruit and vibrant color reflect an ideal emotional landscape, where even the impossible becomes real.

The girl, glowing with youth and curiosity, embodies the pure self—innocent yet courageous, playful yet seeking. Her lemon-shaped head piece reflects her oneness with the subconscious world & her openness to transformation and light.

The Garden of Lemonlight invites us into a world where the unseen becomes visible, and the emotional self is allowed to bloom. It is not merely a dream, but a reflection of something deeply human—the longing for joy, healing, inner clarity.



## IGuyy

Thailand

Ratchapol Assawaudomkul (iGuyy) holds a degree in Visual Arts, specializing in Painting, from the Faculty of Fine and Applied Arts at Chulalongkorn University. His commitment to lifelong learning and artistic exploration has been a driving force throughout his academic and professional work. His creative odyssey began upon the culmination of his university education. Central to his artistic expression is the character Gump, through whom he weaves narratives of daring escapades across varied terrains. IGuyy blends fusion of pop art, street art, and collage techniques.

IGuyy is actively exhibiting in art galleries (Mango Art Festival, Liberty of Art TH, LOF Gallery TH, Rorita Artspace TH, Palette Artspace TH, and also Meiro Collection Gallery IDN).



# Off the Wall

**IGuyy** Thailand

*H 20 cm*

*Resin Art Sculpture*

*Edition of 1*

*2025*



# Off the Wall

Inspired by Banksy's stencil work, this piece reimagines my first art toy,

but in a black and white version.

By merging flat imagery with form,

the character breaks free from the canvas,

blurring the line between painting and life.





# On the Wall

**IGuyy** Thailand

*50 x 60 cm*

*Stencil and Acrylic on Canvas*

*2025*



## Jane Kibari

Thailand

Pacharawan Wattanawongsakul, a graduate of Suan Sunandha Rajabhat University in Painting, is a full-time Thai artist specializing in character art. Since childhood, Jane has always loved drawing. Her passion for it stemmed from her love of watching cartoons since child. Jane's often imagines the people around her as cartoon characters. Kibari is Jane's imaginary friend. She accompanies Jane as a wizard with a heart full of courage & determination. Kibari gave her the courage to walk forward. Jane would love to introduce Kibari to everyone, giving her life through artwork.

Jane is actively exhibiting in art galleries (AGNI Gallery TH, StreetStar Gallery TH, 333 Gallery TH, Liberty of Art TH, Sawadee Panda Art Fair CHI, & Meiro Collection Gallery IDN).



## *EXCLUSIVE SCULPTURE PROJECT*

Meiro Collection started exclusive sculpture production in the year 2025. **We support talented artists in**, either transforming their painting into a physical sculpture or resizing a small sculpture into larger size.

3 sculptures have been produced in the previous exhibition (with the collaboration with 3 artists: Pamkids, Kung Sholl, & Nicolas Lesaffre)

This time we partner with **Jane Kibari** - a talented Thai artist for 3 more exclusive sculptures. It is Jane's female character Kibari that transforms from painting into a resin sculpture - with 3 colors & size variations:

- Miki & Kibari in the Candoria (Pink) - H 28 cm
- Miki & Kibari in the Candoria (Blue) - H 28 cm
- Miki & Kibari in the Candoria (Black) - H 100cm

The project will continue, as Meiro Collection will keep on giving the best support to talented artists for our upcoming events & exhibitions.



**meiro**  
collection



*H. Bariz*

our 4th exclusive sculpture



**meiro**  
collection

*Sculpture*



**meiro**  
collection



*Kibari*

## **Kibari & Miki in the Candoria (Pink)**

**Meiro x Jane Kibari** Thailand

*H 28 cm*

*Resin Art Sculpture*

*Edition of 10*

*2025*



**meiro**  
collection



*H. Bariz*

our 5th exclusive sculpture

**meiro**  
collection

*Sculpture*



**meiro**  
collection



*Kibari*

## **Kibari & Miki in the Candoria (Blue)**

**Meiro x Jane Kibari** Thailand

*H 28 cm*

*Resin Art Sculpture*

*Edition of 10*

*2025*



**meiro**  
collection



*H. Bariz*

our 6th exclusive sculpture

**meiro**  
collection

*Sculpture*



**meiro**  
collection



*Kibari*

## **Kibari & Miki in the Candoria (Black)**

**Meiro x Jane Kibari** Thailand

*H 100 cm*

*Fiberglass Art Sculpture*

*Edition of 5*

*2025*



## Sprinkles of Happiness

**Jane Kibari** Thailand

*60 x 80 cm*

*Oil on Canvas*

*2025*

# Sprinkles of Happiness

Sometimes, all we need is just a little sprinkle of happiness  
a small moment, a kind word, or a simple smile-to brighten even the cloudiest days.

These tiny sparks of joy can lift our spirits, remind us of the beauty around us,

and help us keep moving forward,

no matter how heavy the clouds may seem.







## Kibari & Miki in the Candoria

**Jane Kibari** Thailand

*60 x 80 cm*

*Oil on Canvas*

*2025*

# Kibari & Miki in the Candoria

Kibari is Jane's imaginary friend.

She accompanies Jane as a wizard with a heart full of courage & determination.

Kibari gave her the courage to walk forward.

Jane would love to introduce Kibari to everyone.

giving her life through artwork.



## Fluffy Sky of Treats

**Jane Kibari** Thailand

*60 x 80 cm*

*Oil on Canvas*

*2025*

# Fluffy Sky of Treats

Happiness is like the sky - vast, open, and full of endless possibilities.

It stretches beyond what the eye can see, inviting us to dream bigger,

breathe deeper, and embrace the freedom to be truly ourselves.

Just as the sky changes colors with every sunrise and sunset,

happiness too flows and shifts, reminding us that joy can be found in every moment,

no matter how vast or small.





## Klaris

Philippines

KLARIS is a contemporary multimedia artist renowned for her unique designer toys. Her art style is rooted in pop art, characterized by vibrant colors, bold graphics, and a playful approach to cultural themes. Her creation, "Maria" the Off White Lady, reimagines a traditional folklore figure into a vibrant resin collectibles that embodies both contemporary fashion trends and the essence of Filipino culture. Klaris is now evolving her IP into diverse varieties and colorways.

Klaris is actively exhibiting in art galleries (Manila Bang Show, Vinyl on Vinyl Gallery PH, Secret Fresh Gallery PH, Meatspace Gallery PH, and Meiro Collection Gallery IDN), also art toy conventions (ToyCon PH, UnboxCon PH, Taipei Toy Festival, Jakarta Toys & Comic Fair, Pop Toy Show SG)



# Afternoon Sanctuary

**Klaris** Philippines

60 x 76 cm

*Acrylic on Canvas*

2025

# Afternoon Sanctuary

Every afternoon, just as the sun begins to dip and begin its golden hour,  
Maria returns to her garden.

She spends her morning roaming—drifting through the busy streets, peeking  
into empty houses, and watching the living world normally move.

People would shiver when she passes, doors would shut quickly,  
and dogs would bark at nothing.

Maria didn't blame them, but she is not here to haunt anyone.  
She just likes to see the world, to see how it is to be like them.

Still, wandering leaves her tired. So every afternoon,  
she comes home to her favorite refuge, the garden.







# Sakura Soul (Standing)

**Klaris** Philippines

*H 25 cm*

*Resin Art Sculpture*

*Edition of 1*

*2025*

# Sakura Soul, Standing

This piece is a 10-inch one of a kind version of

the Maria Sakura Soul colorway.

Maria is dressed in a light pink color with  
cute and pretty details of cherry blossom flowers.





# Sakura Soul (Sitting)

**Klaris** Philippines

*H 20 cm*

*Resin Art Sculpture*

*Edition of 1*

*2025*

# Sakura Soul, Sitting

This piece is a 8-inch one of a kind version of  
the Maria Sakura Soul colorway.

Maria is dressed in a light pink color with  
cute and pretty details of cherry blossom flowers.





# Kung Sholl

Thailand

Kung Sholl is a graduate of Khon Kaen University. The sad boy with a frown on his face, was inspired by himself in the period of continuity that was too young to the world, and not understanding how to reduce sadness, pain, regret and pain through many experiences. The character of Juzepe, a normal boy, around 6-7 years old, mostly has a characteristic, questions and sigh for carefulness the from what he trusts regularly. Juzepe always remind us of the importance of going through disappointment.

Kung Sholl is actively exhibiting in art galleries (AGNI Gallery TH, Liberty of Art Gallery TH, M Contemporary Emsphere Gallery TH, Vanich Gallery TH, 333 Gallery TH, Sawadee Panda Art Fair CHINA, and Meiro Collection Gallery IDN).



# Feelingless

**Kung Sholl** Thailand

*50 x 70 cm*

*Oil on Canvas*

*2025*

# Feelingless

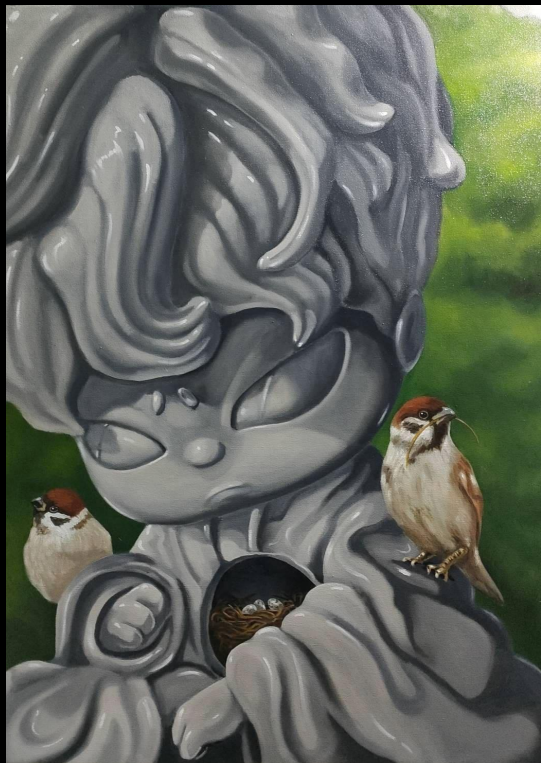
It's almost painless when you keep rehashing the old wounds.

We almost get used to it, and in the end,

we're the only ones left with it.







# Territory 1

**Kung Sholl** Thailand

*60 x 80 cm*

*Oil on Canvas*

*2025*

# Territory 1

The bird builds its nest where it finds peace

for home is where the heart

feels calm and safe.





# Territory 2

**Kung Sholl** Thailand

*60 x 80 cm*

*Oil on Canvas*

*2025*

## Territory 2

The garden makes your heart gentle.

you become one with it...

No place for greed or anger there.





## Little Poupees

Malaysia

Moon Lee is a Malaysian artist whose lifelong passion for drawing led her into a career as a 2D animator. Driven by a desire to bring her own characters to life beyond flat screen, she transitioned into handcrafted art, turning childhood imaginings of tiny people into tangible creations. One of her signature creations is OliGal, a brave, determined little girl who navigates challenges with resilience & dreams boldly. Through each piece, Moon seeks to inspire creativity and courage, inviting us into the limitless world of handmade art

Moon Lee is actively exhibiting in art toy conventions (Taipei Toy Festival, Pop Toy Show Singapore, JCCAC Hong Kong, Designer Con California, & The Jakarta Toys & Comic Fair) and first time exhibiting with Meiro Collection Gallery IDN.



## OilGal & Mushroom

**Little Poupees** Malaysia

*H 30 cm*

*Resin Art Sculpture, Magnet, Felt, Epoxy*

*Edition of 1*

*2025*

## OilGal & Mushroom

Mushrooms grow in the shadow, like the little troubles we often overlook in our lives.

Just because you don't see them, doesn't mean they aren't there.

That's why OliGal is here, to bring the spotlight to the mushrooms that are

existing quietly by our side.







## OilGal the Candy Bunny

**Little Poupees** Malaysia

*H 15 cm*

*Resin Art Sculpture, Magnet, Felt*

*Edition of 10*

*2025*

**meiro**  
collection

*Sculpture*

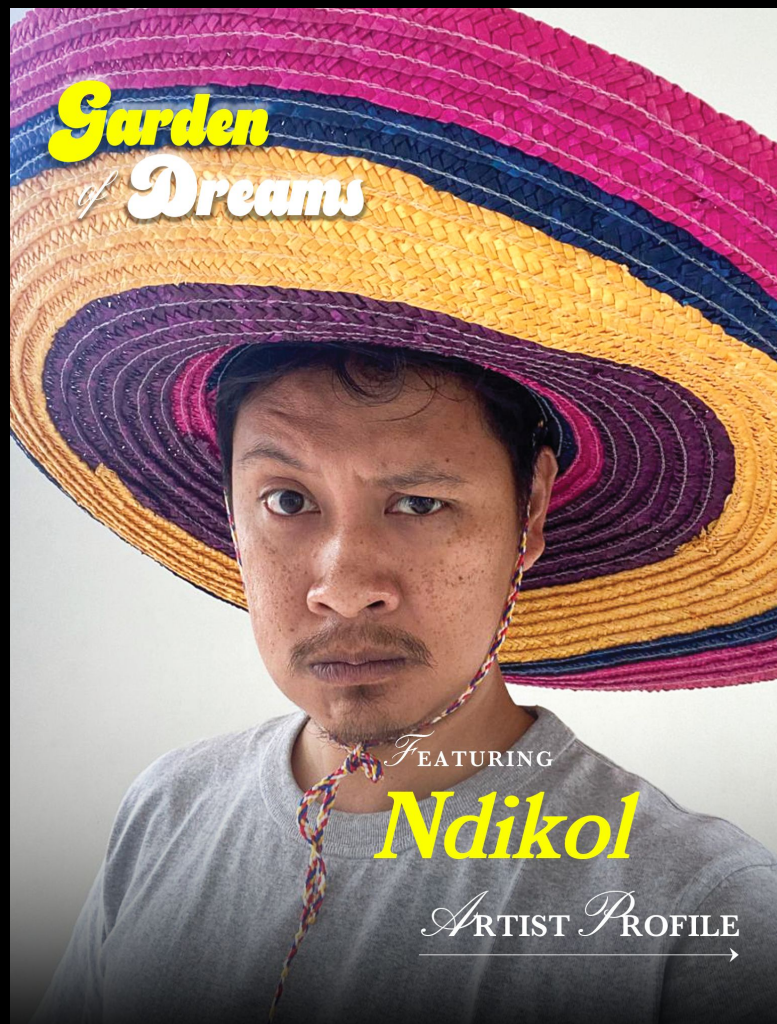
## OilGal the Candy Bunny

OLIGAL transforms into a bunny spirit

wandering through a magical forest

in search of hidden wonders.





## Ndikol

Indonesia

Ndikol is an artist from Jogja with over a decade of experience in design and has been creating art toys since 2019. His work is heavily influenced by black comedy, wordplay, and dark humor. Inspired by Banksy, Ndikol addresses social issues through symbols that are relatable and universally understood. He blends pop art with iconic cartoon characters in a personal way, giving each character objects they genuinely love. Ndikol also created his own character, Broken Heart Ranger, which symbolizes the spirit to keep moving forward despite being broken.

Ndikol is actively exhibiting in art galleries (Meiro Collection Gallery IDN, WeMe Contemporary Gallery IDN, and the upcoming Art Moments Jakarta 2025 with Meiro Collection).

# Heart Rebellion

A loud scream amidst the silence  
right in front of the covered face saying:  
"yes, I am a robot with a gentle heart"



# Heart Rebellion, Color

**Ndikol** Indonesia

*H 25 cm*

*Resin Art Sculpture*

*Edition of 33*

*2025*



# Heart Rebellion, Gray

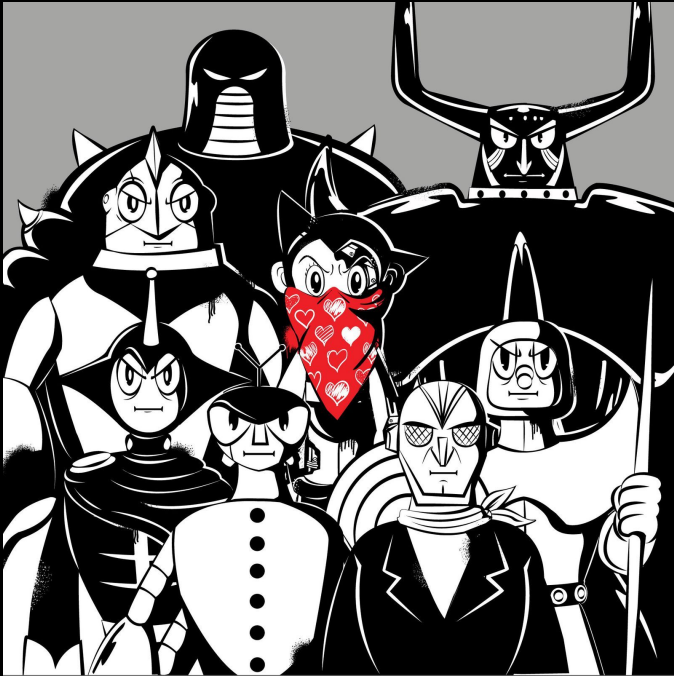
**Ndikol** Indonesia

*H 25 cm*

*Resin Art Sculpture*

*Edition of 33*

*2025*



# Heart Rebellion

**Ndikol** Indonesia

*100 x 100 cm*

*Acrylic on Board*

*2025*



# Spreading Hearts

**Ndikol** Indonesia

*100 x 100 cm*

*Acrylic on Board*

*2025*



## Garden of Dreams



FEATURING  
**PoYun Wang**  
ARTIST PROFILE →

## Poyun Wang

Taiwan

Poyunwang is an illustrator born in Taiwan, raised in Canada, and a graduate of the California College of the Art and Craft. His work is known for its dark humor and deadpan tone, capturing the absurdity and helplessness of everyday life with biting social commentary and self-deprecating wit. His inspiration comes from his two annoying boys at home while watching cartoons and movies with them. Poyun Wang is now one of the most celebrated toys designers with worldwide success & fame.

Poyun Wang is actively exhibiting in art galleries (Art Monster Art Fair TWN, Meiro Collection Gallery IDN), and in toy conventions (Pop Toy Show Singapore, Thailand Toy Expo, Taipei Toy Festival, Singapore Comic Con, etc)



# Putto Bambino

**Poyun Wang x Aksoulmuch** Taiwan

*H 20 cm*

*Vinyl Art Sculpture*

*Edition of 100*

*2024*

**meiro**  
collection

*Sculpture*



# Babysit With Me

**Poyun Wang** Taiwan

*H 20 cm*

*PVC Art Sculpture*

*Edition of 200*

*2024*



# The Hunt

**Poyun Wang** Taiwan

*H 15 cm*

*Vinyl Art Sculpture*

*Edition of 200*

*2024*

**meiro**  
collection

*Sculpture*



# Joke With Me

**Poyun Wang** Taiwan

*H 15 cm*

*Resin Art Sculpture*

*Edition of 200*

*2024*



# Squat With Me

**Poyun Wang** Taiwan

*H 14 cm*

*PVC Art Sculpture*

*Edition of 200*

*2023*

**meiro**  
collection

*Sculpture*



# Sit With Grandpa

**Poyun Wang** Taiwan

*H 15 cm*

*Resin Art Sculpture*

*Edition of 200*

*2024*



# Daoshi

**Poyun Wang** Taiwan

*H 20 cm*

*PVC Art Sculpture*

*Edition of 80*

*2024*



**meiro**  
collection

*Sculpture*



# Chinese Vampire 2

**Poyun Wang** Taiwan

*H 20 cm*

*PVC Art Sculpture*

*Edition of 80*

*2024*

**meiro**  
collection

*Sculpture*



# Chinese Vampire 3

**Poyun Wang** Taiwan

*H 20 cm*

*PVC Art Sculpture*

*Edition of 80*

*2024*

A portrait of Rizal Ulum, a man with dark curly hair and glasses, wearing a white shirt. The background is blurred, showing other people. The text 'Garden of Dreams' is in the top left, and 'FEATURING Rizal Ulum ARTIST PROFILE' is in the bottom right of the image area.

## Garden of Dreams

FEATURING

**Rizal Ulum**

ARTIST PROFILE →

## Rizal Ulum

Indonesia

Over a decade sculpting pixels in the digital world, shaping emotion through geometry, finding meaning in mesh. Now creating designer toys named CRLY that speak the unspoken stories of mental health, vulnerability, and survival. He sculpts digital forms with emotion at their core, turning invisible struggles into something you can see, feel, and hold. "It's not just a toy, it's a vessel for emotion, a character you might recognize in yourself."

Rizal Ulum is actively exhibiting in art galleries (Art:i New Museum Gallery IDN, Meiro Collection Gallery IDN, Grey Art Gallery BDG, and the upcoming Art Moments Jakarta 2025 with Meiro Collection) also in art toy conventions (The Jakarta Toys & Comic Fair, Thailand Toy Expo, ToyCon PH).

# Slapped by Reality

When pink dreams meet black truth. Remember when you thought life would be beautiful?.

All pink skies, simple choices, happy endings?

So what happened? Why does everything feel heavier now?

Why does hope come with pressure, and peace feel fake?

Why does it look soft on the outside, but feel like it's falling apart inside?

The black stains aren't flaws, they're the truth we all carry.

CRLY ask what you've been too tired to say out loud.

Is this what growing up feels like? Or is this just... reality?



# CRLY: Slapped by Reality

**Rizal Ulum** Indonesia

*H 30 cm*

*Resin Art Sculpture*

*Edition of 10*

*2025*



# CRLY: Slapped by Reality

**Rizal Ulum** Indonesia

*H 45 cm*

*Resin Art Sculpture*

*Edition of 10*

*2025*



# I Scream: Slapped by Reality

**Rizal Ulum** Indonesia

*H 45 cm*

*Resin Art Sculpture*

*Edition of 10*

*2025*



# I Scream: Slapped by Reality

**Rizal Ulum** Indonesia

*H 20 cm*

*Soft Vinyl Art Sculpture*

*Edition of 10*

*2025*





# Slapped by Reality

**Rizal Ulum** Indonesia

*Diameter 60 cm*

*Acrylic on Canvas*

*2025*



# Slapped by Reality

**Rizal Ulum** Indonesia

*40 x 60 cm*

*Paper*

*Edition of 25*

*2025*



## Roya Kanok

Thailand

Roya Kanok (Kanokon Chaklang), also known as Fahsai, is a Thai mixed-media artist whose work blends emotion, imagination, and narrative. A graduate of Suan Sunandha Rajabhat University's Faculty of Fine and Applied Arts, Roya has exhibited widely across Thailand, creating vibrant, story-rich pieces that explore themes of memory, identity, and connection through handcrafted techniques. Her paintings are characterized by combining female character with the use of mixed-media elements.

Roya Kanok is actively exhibiting in art galleries (L.O.F Gallery TH, Liberty of Art Gallery TH, Union Co-Art Space TH, Temp Gallery TH, ArtVenture NFT Gallery TH, Sawadee Panda Art Fair CHI, and first time with Meiro Collection Gallery IDN)



# The Fishbowl Princess

**Roya Kanok** Thailand

*60 x 80 cm*

*Mixed Media on Canvas*

*2025*

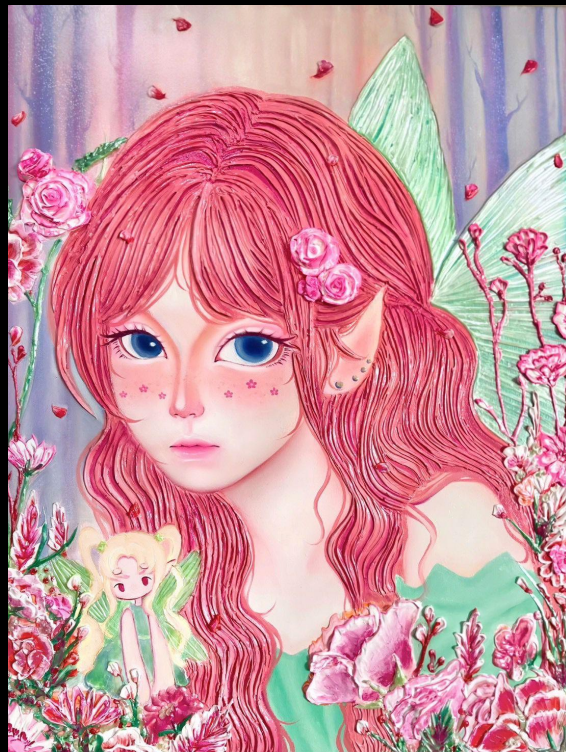
## The Fishbowl Princess

A radiant princess lives behind a clear glass wall —  
one that allows her to see the world outside, but never truly touch it.

She gazes out through bubbles and reflections,  
her heart weighed down by quiet boredom and a sense of stillness,  
trapped inside a beautiful frame the world calls “lovely.”







# The Backyard Spirit

**Roya Kanok** Thailand

*60 x 80 cm*

*Mixed Media on Canvas*

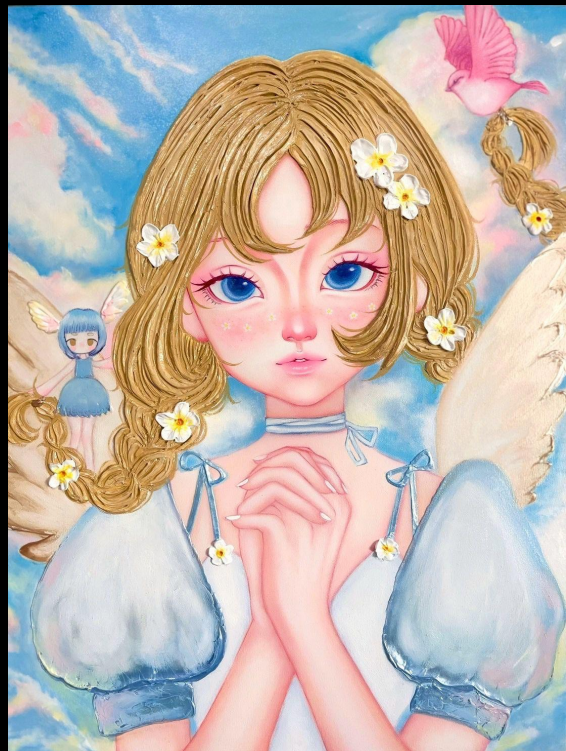
*2025*

## The Backyard Spirit

She is not a fairy from a grand tale, nor a character meant for center stage.

She is the quiet spirit of the backyard while most people  
are out fulfilling roles the world deems important,  
she remains behind, watching over and gently protecting  
the overlooked little things that make life quietly beautiful.





# The Cloud Guardian

**Roya Kanok** Thailand

*60 x 80 cm*

*Mixed Media on Canvas*

*2025*



# The Cloud Guardian

When we look up at the sky,  
clouds may seem like nothing more than drifting mist.  
But beyond that softness floats a guardian in the light's shadow  
a fairy who cradles the dreams of children so they do not fall,  
and gathers the quiet whispers of sorrow,  
releasing them as a gentle, healing rain.





## Silvia Tampi

Indonesia

Silvia Tampi is the only female Indonesian toy designer, known for her bold, pop culture-inspired creations. A graduate of Trisakti University in Visual Communication Design, she began her journey as a graphic designer before turning her childhood passion of toy collecting into a career. Her original works include Fatty Bones, Fudog Warrior, and Fat Attacks, each blending humor, social commentary, and sculptural craft. JourneytotheWildWild West is her new work

Silvia Tampi is active in art toy conventions (ACGGBA Elefunpop CHI, ACGHK Elefunpop HK, The Jakarta Toys & Comic Fair, Indonesia Designer Art-Toys Expo, Indonesia Game Expo IGX, and many other art toy events). This is Silvia's first time exhibiting with Meiro Collection Gallery IDN.

## Journey to the Wild-Wild West

A good friend can be as valuable as any treasure

Inspired by the legendary story Journey to the West, Silvia Tampi took the “friendship” as the highlight of her latest art toys: “Journey to the Wild-Wild West”. The importance of loyalty and mutual understanding is the key from their journey. The unique bond and value of strong relationships between Wukong, Zhu Bajie, Wujing, Tang the Monk and White Dragon horse make them find joy and embrace their wild adventure to the West. Because it’s not about the destination, it’s about the journey they share together.

So, “Journey to the Wild-Wild West” is to celebrate friendship full of sunshine,

made with love by Silvia Tampi.



## **Journey to the Wild Wild West**

**Silvia Tampi** Indonesia

*15 x 15 x 15 cm (x 4 figure)*

*Resin Art Sculpture*

*Edition of 1*

*2025*



## Journey to the Wild Wild West

**Silvia Tampi** Indonesia

*6 x 6 x 6 cm (x 4 figure)*

*Resin Art Sculpture*

*Edition of 5*

*2025*



## Golden Treasure

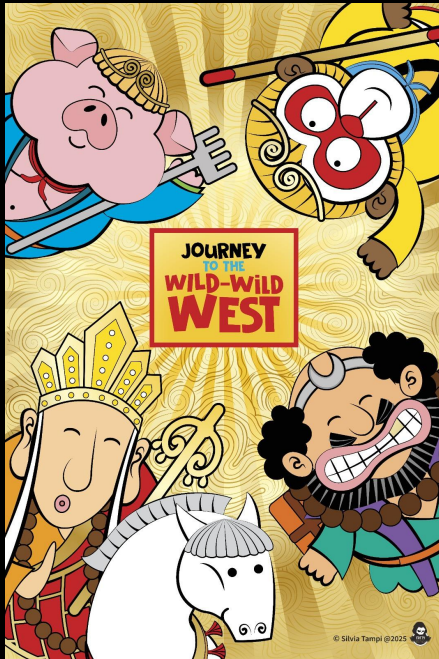
**Silvia Tampi** Indonesia

*60 x 90 cm*

*Artprint printed on Gold Acrylic*

*Edition of 3*

*2025*



## Friendship Full of Sunshine

**Silvia Tampi** Indonesia

60 x 90 cm

*Artprint printed on Gold Acrylic*

*Edition of 3*

2025



## waniwani

Thailand

waniwani is a Thai artist whose character, Baby Aileen, is a child with blonde hair and a sunflower for a head. Inspired by the idea that humans are born with little more than dreams-our essential energy for living-Aileen symbolizes growth, much like a sunflower reaching for sunlight. Through this character, waniwani expresses stories of dreams, daily life, and a wide range of emotions in her art. Started as a painter, waniwani is now into sculpture too with her character transforming into 3D.

Waniwani is actively exhibiting in art galleries (Sawadee Art Fair Festival CHI, Vanich Gallery TH, Holidate Cafe TH, Pancakes & Booze Art Show TH, Love Yourself Gallery TH, ArtYard Festival TH, and Meiro Collection Gallery IDN). also on other events (Illustfusion TH, Garden Craft Market TH)



## Aileen - She Who Carried the Sunlight

High above the soft colored sky, Aileen sits gracefully upon a blooming flower,  
floating gently through the air. In her hands, she cradles a single sunflower seed.

As small as it may seem, it holds a quiet, radiant warmth within,  
like a promise waiting to bloom.

She is a gentle traveler with a clear purpose: to journey far and wide  
in search of those who may have lost their way, who feel hopeless,  
or have begun to forget their dreams. To each one, she brings a tender whisper:

“There is still light, even if you can’t see it right now.”

By her side are the two Waloons, imaginary friends brought to life. One is shy and  
tender, the other bold and full of fire. Together, they walk with her through every  
emotion, each one a part of the heart she carries.

Butterflies drift behind her like sunlight with wings.



## Aileen - She Who Carried the Sunlight

**waniwani** Thailand

*H 25 cm*

*Resin Art Sculpture*

*Edition of 10*

*2025*



## She Who Carried the Sunlight

**waniwani** Thailand

*60 x 80 cm*

*Acrylic on Canvas*

*2025*



*THANK YOU*