



ART JAKARTA

26 - 28 AUG 2022

JCC SENAYAN

BOOTH D1

ArtSociates

EDDY SUSANTO
ELDWIN PRADIPTA
ERWIN WINDU PRANATA
ETZA MEISYARA
GUNTUR TIMUR
JIM ALLEN ABEL
MUHAMMAD AKBAR
MUJAHIDIN NURRAHMAN
NESAR EESAR
RENDY RAKA PRAMUDYA
RESTU TAUFIK AKBAR
WILDAN SUGARA



EDDY SUSANTO | Kunjarakarna of Dante after Gustav #1 | Drawing Pen and Acrylic on Canvas | 190 x 265 cm | 2022



EDDY SUSANTO | Inferno of Karmawibangga Borobudur Relief #4 | Drawing Pen and Acrylic on Canvas | 190 x 265 cm | 2022

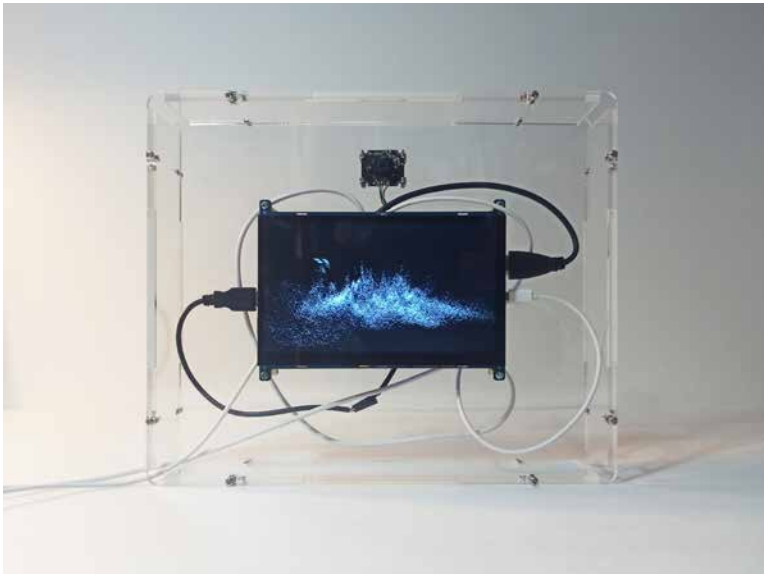


EDDY SUSANTO | Renaissance of China #7 | Drawing Pen and Acrylic on Canvas | 190 x 280 cm | 2021



EDDY SUSANTO | Cosmology #3 Adam & Eva, Crispijn Van de Passe |

Drawing Pen and Acrylic on Canvas | 190 x 262 cm | 2019



ELDWIN PRADIPTA

Beauty Is In The Eye of the Debugger | Single-board computer, C++ code, 7-inch LCD Screen, camera, acrylic | 30 x 25 x 6 cm (4 editions+AC) | 2022



ERWIN WINDU PRANATA

Interlude Fragments | Iron Sheet, Polyurethane Paint | 33 x 33 x 55 cm | 2022



ERWIN WINDU PRANATA

Remixed Script #1 | Polyurethane paint on galvanized steel | 30 x 28 x 64 cm | 2022



ETZA MEISYARA

The Solitary Space of Silence (The Secret Garden) | Photo Etching, Patina , Acrylic
Paint, Resin & Gold Powder on Metal Plate | 122 x 81 cm | 2022



ETZA MEISYARA

The Solitary Space of Silence (The City Light) | Photo Etching, Patina , Acrylic Paint,
Resin & Gold Powder on Metal Plate | 122 x 81 cm | 2022



ETZA MEISYARA

The Solitary Space of Silence (The Reservoir) | Photo Etching, Patina , Acrylic Paint,
Resin & Gold Powder on Metal Plate | 122 x 81 cm | 2022



GUNTUR TIMUR

Suggestive Landscape #8 | Oil on Canvas | 105 x 125 cm | 2022



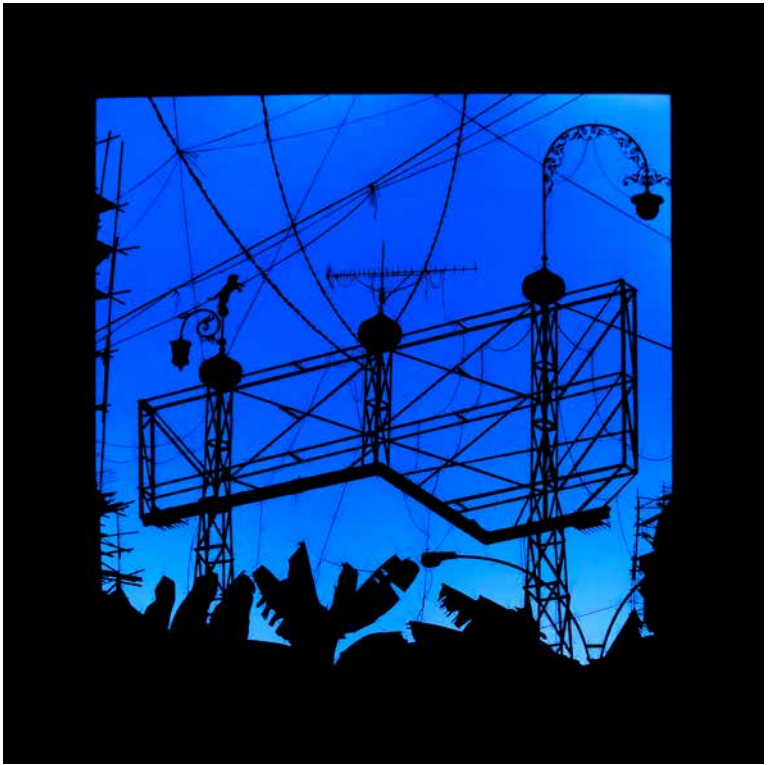
GUNTUR TIMUR

Suggestive Landscape #9 (Mother_Child) | Oil on Canvas | 105 x 125 cm | 2022



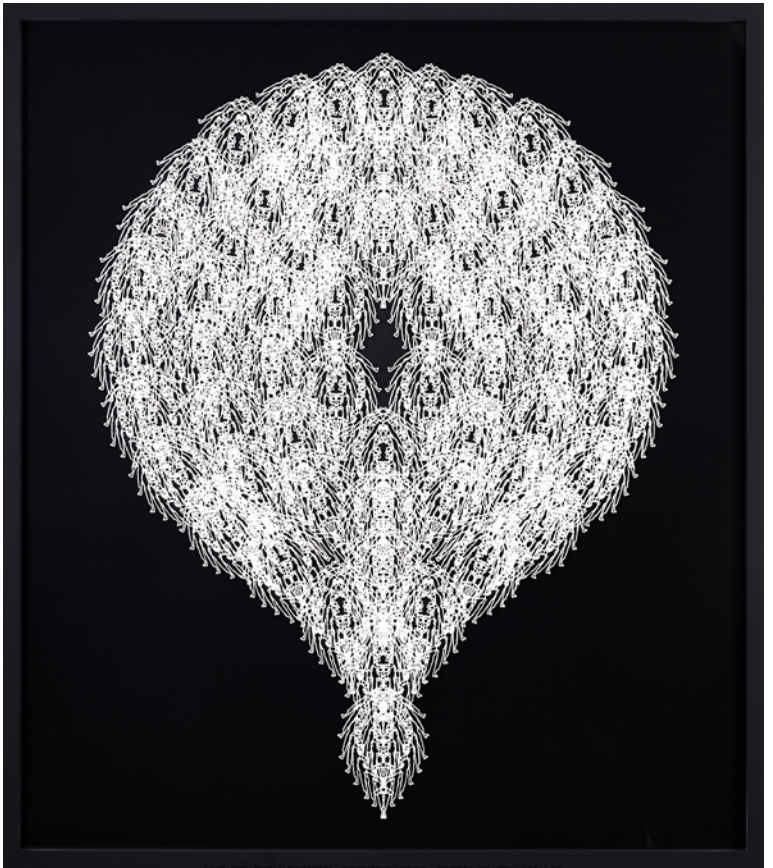
JIM ALLEN ABEL

Medical Device Packaging Tear Resistant (1/3 Edisi+2 AP) | Digital C Print on Kodak Professional Photo Paper mounted on Diasec | 150 x 100 cm | 2022



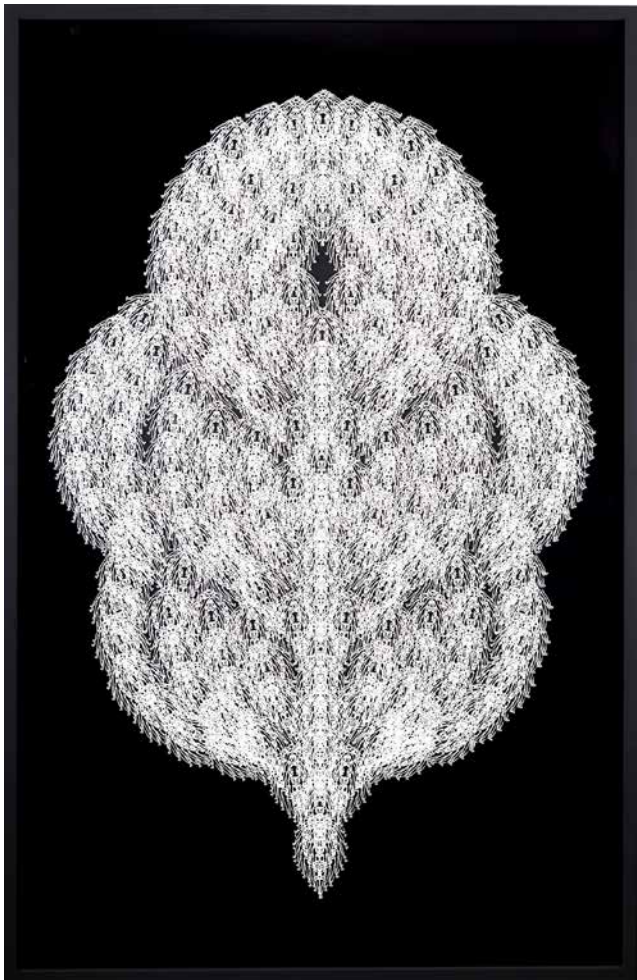
MUHAMMAD AKBAR

Frog Eye on Untitled IV | Paper, Backlight, Needles | 100 x 100 cm | 2022



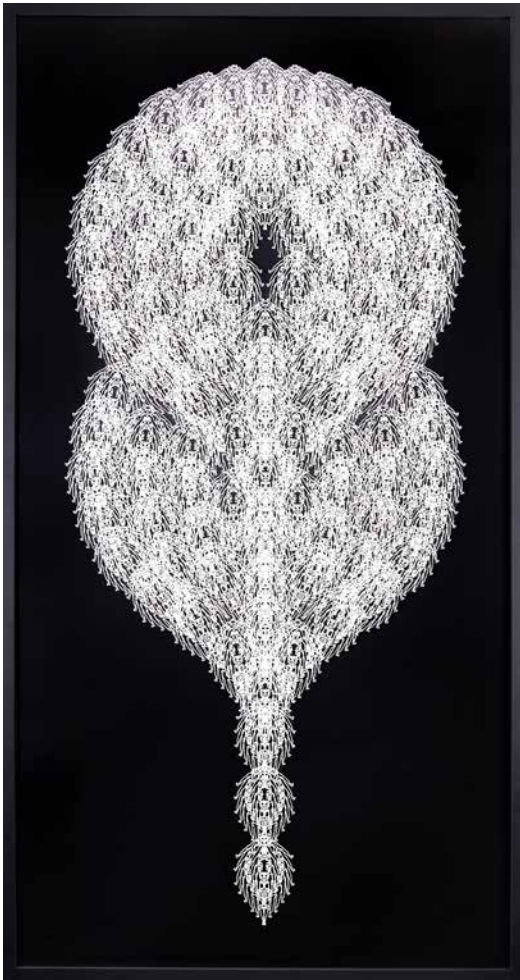
MUJAHIDIN NURRAHMAN

Women Living In Danger #1 | Paper Handcut, Paint, Wood | 119 x 135 cm | 2022



MUJAHIDIN NURRAHMAN

Women Living In Danger #2 | Paper Handcut, Paint, Wood | 127 x 195 cm | 2022



MUJAHIDIN NURRAHMAN

Women Living In Danger #3 | Paper Handcut, Paint, Wood | 225 x 120 cm | 2022



NESAR EESAR | Eternal Waiting #10 | Oil On Canvas | 250 x 130 cm | 2022



1



2



3

NESAR EESAR

Eternal Waiting #14¹ | Mixed Media on Paper | 24 x 28 cm | 2022

Eternal Waiting #22² | Mixed Media on Paper | 24 x 28 cm | 2022

Eternal Waiting #24³ | Mixed Media on Paper | 24 x 28 cm | 2022



NESAR EESAR | Eternal Waiting #32 | Mixed Media on Paper | 110 x 155 cm | 2022



NESAR EESAR | Eternal Waiting #33 | Mixed Media on Paper | 110 x 155 cm | 2022



1



2

NESAR EESAR

Eternal Waiting #25¹ | Mixed Media on Paper | 14 x 18 cm | 2022

Eternal Waiting #26² | Mixed Media on Paper | 14 x 18 cm | 2022



RENDY RAKA PRAMUDYA | Kehendak Dalam Penciptaan: Bentuk Pergerakan #1 | Acrylic on Canvas | 180 x 100 cm | 2022

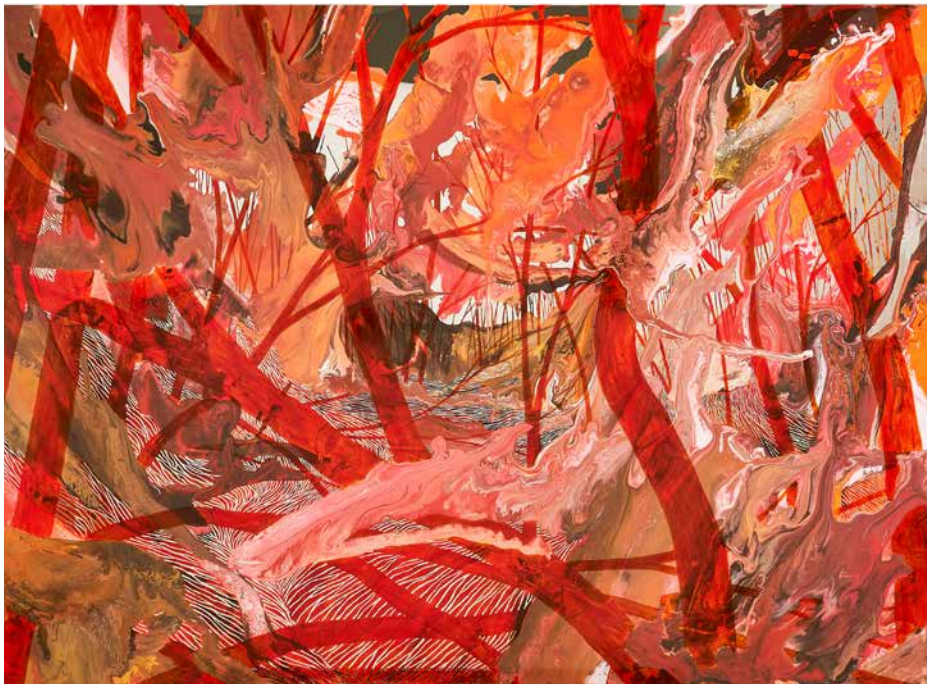


RENDY RAKA PRAMUDYA | Kehendak Dalam Penciptaan: Bentuk Pergerakan #2 | Acrylic on Canvas | 180 x 100 cm | 2022



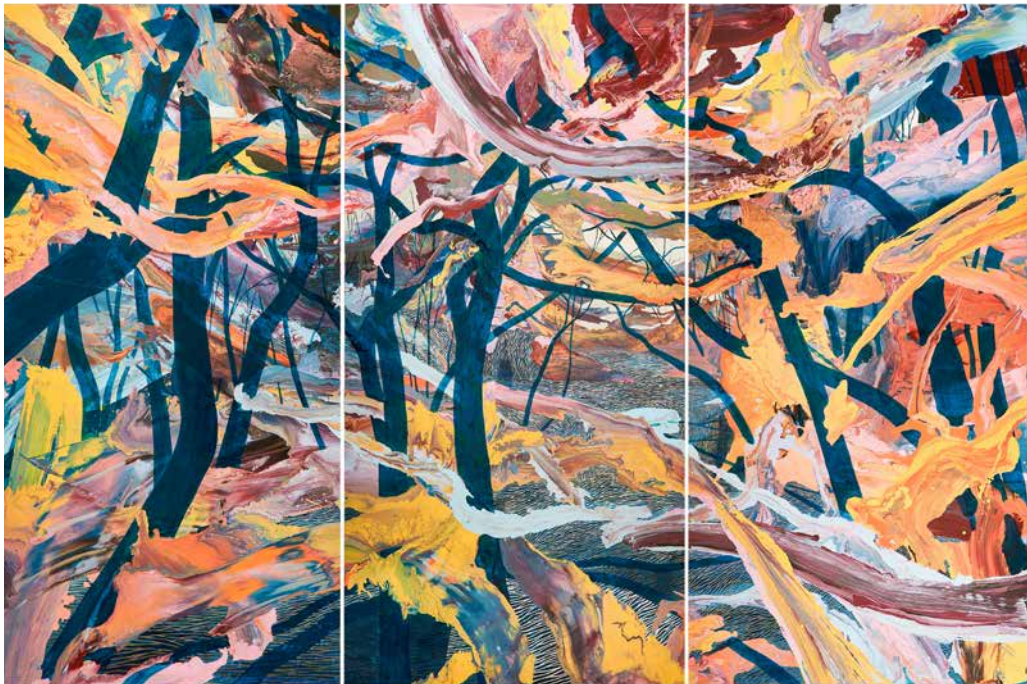
RESTU TAUFIK AKBAR

(In)material truth-catching up with time | Polyurethane, Nitrocellulose, and Vitrail on Stainless Steel Mirror | 150 x 110 cm | 2022



RESTU TAUFIK AKBAR

(In)material truth—chimes | Polyurethane, Nitrocellulose, and Vitrail on Stainless Steel Mirror | 150 x 110 cm | 2022



RESTU TAUFIK AKBAR

(In)material truth-everlong | Polyurethane, Nitrocellulose, and Vitrail on Stainless Steel Mirror | 300x200 cm (Triptych) | 2022



WILDAN SUGARA

Subject; reject | Concrete, text on Plexiglass, Stainless Steel Rod Bracket, Neodymium N25 |

110 x 55 x 9.5 cm | 2022

ArtSociates

Jl. Dago Giri No. 99A,
Mekarwangi,
Lembang, Bandung,
Indonesia 40391
info@artsociates.indonesia
www.artsociates.com
+62 812 1476 946
+62 821 1519 7846